

AP - Inside room 201
 AP - Inside room 205
 AP - Inside room 209



**FACILITY #18 (SM)
 SCIENCE AND MATH BUILDING
 2ND FLOOR PLAN -- WEST WING SECTION**

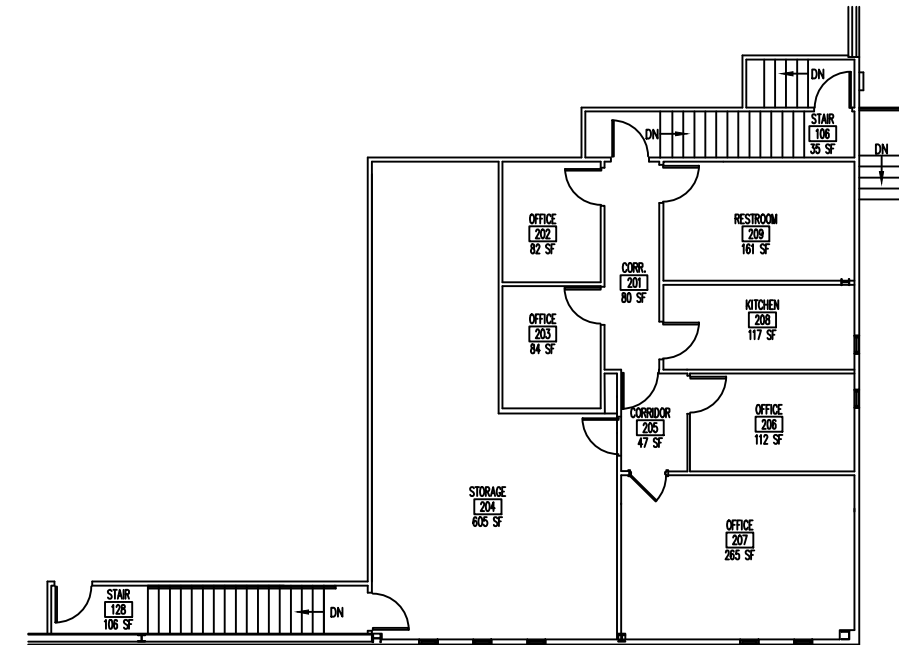
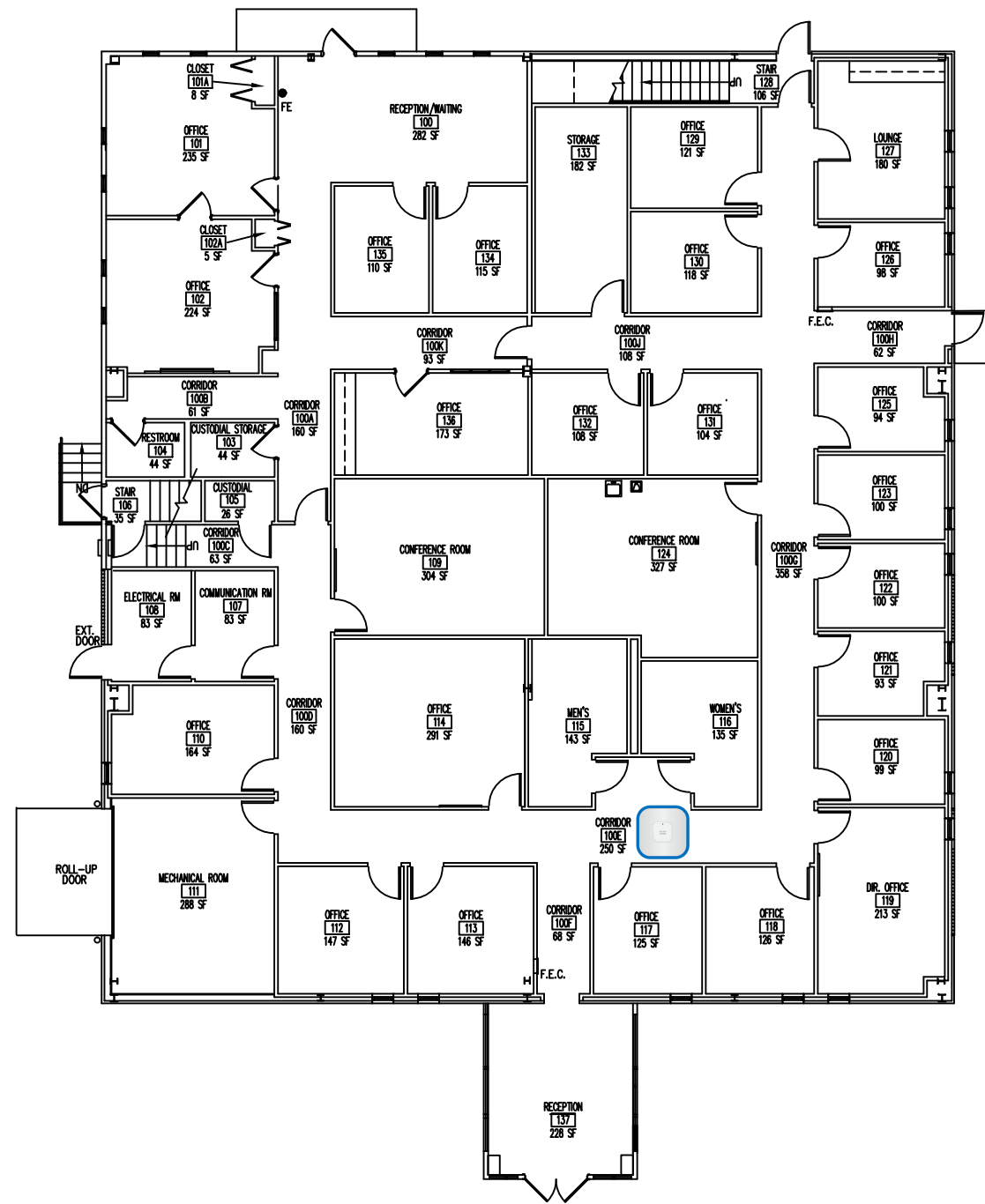


EXT. COVERED AREA FOR COLLEGE USE
 2983/3143 SF
NET ROOMS
 7478/27041 SF
GROSS AREA
 8200/33495 SF

FACILITIES PLANNING AND
 CONSTRUCTION DIVISION

 REVISED BY: AMBER REAMS
 REVISION DATE: 12-05-13
 SCALE: 1/16" = 1'-0"

AP - Hallway



FACILITY #19 (UC)
UNIVERSITY CENTER
1ST AND 2ND FLOOR PLAN

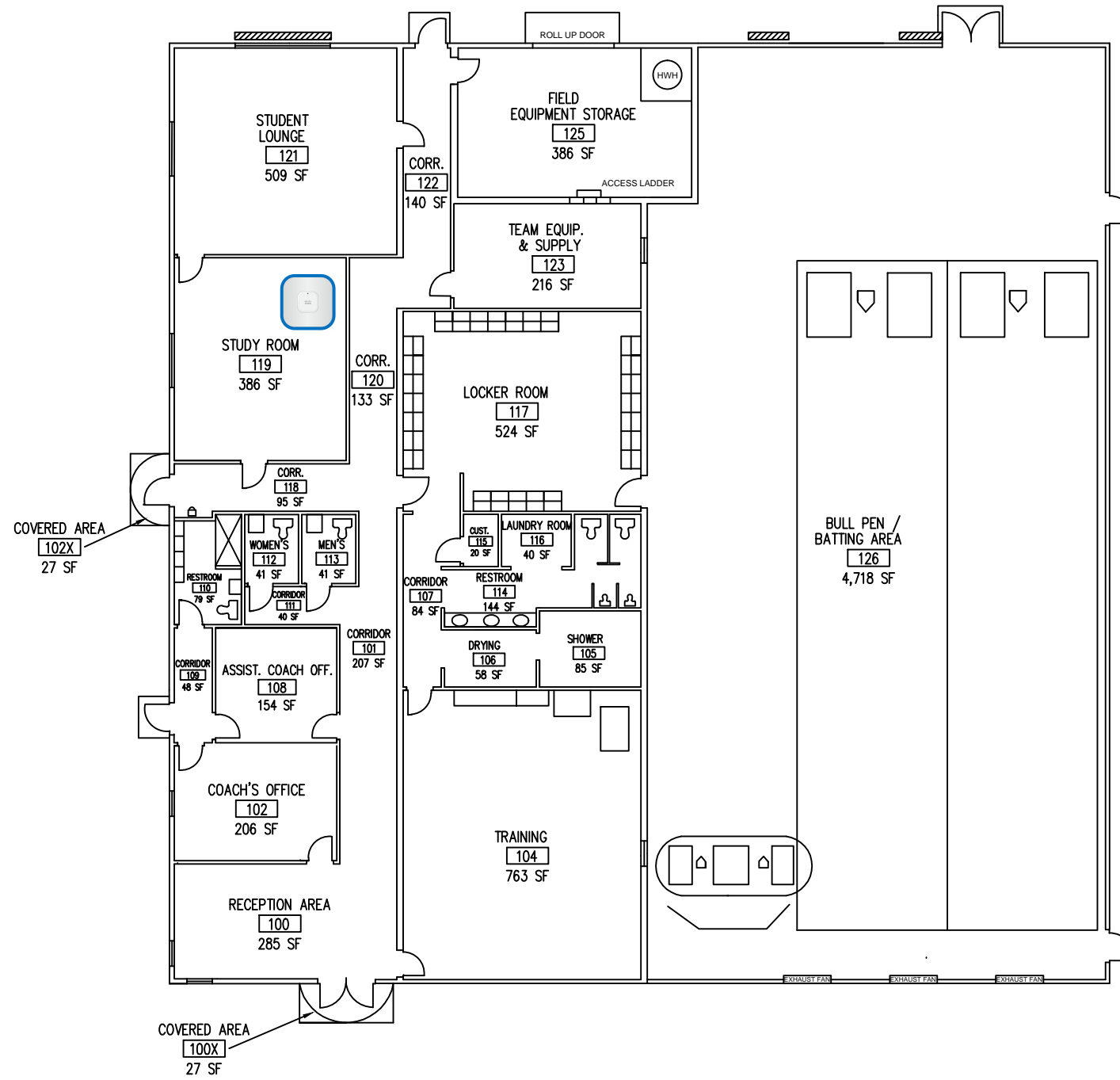


EXT. COVERED AREA FOR COLLEGE USE
0 SF
NET ROOMS
8557 SF
GROSS AREA
8941 SF

FACILITIES PLANNING AND
CONSTRUCTION DIVISION

REVISED BY: AMBER REAMS
REVISION DATE: 04-26-13
SCALE: 1/16" = 1'-0"

AP - Unknown location



**FACILITY #20 (BA)
BASEBALL FIELD HOUSE
1ST FLOOR PLAN**

EXT. COVERED AREA FOR COLLEGE USE

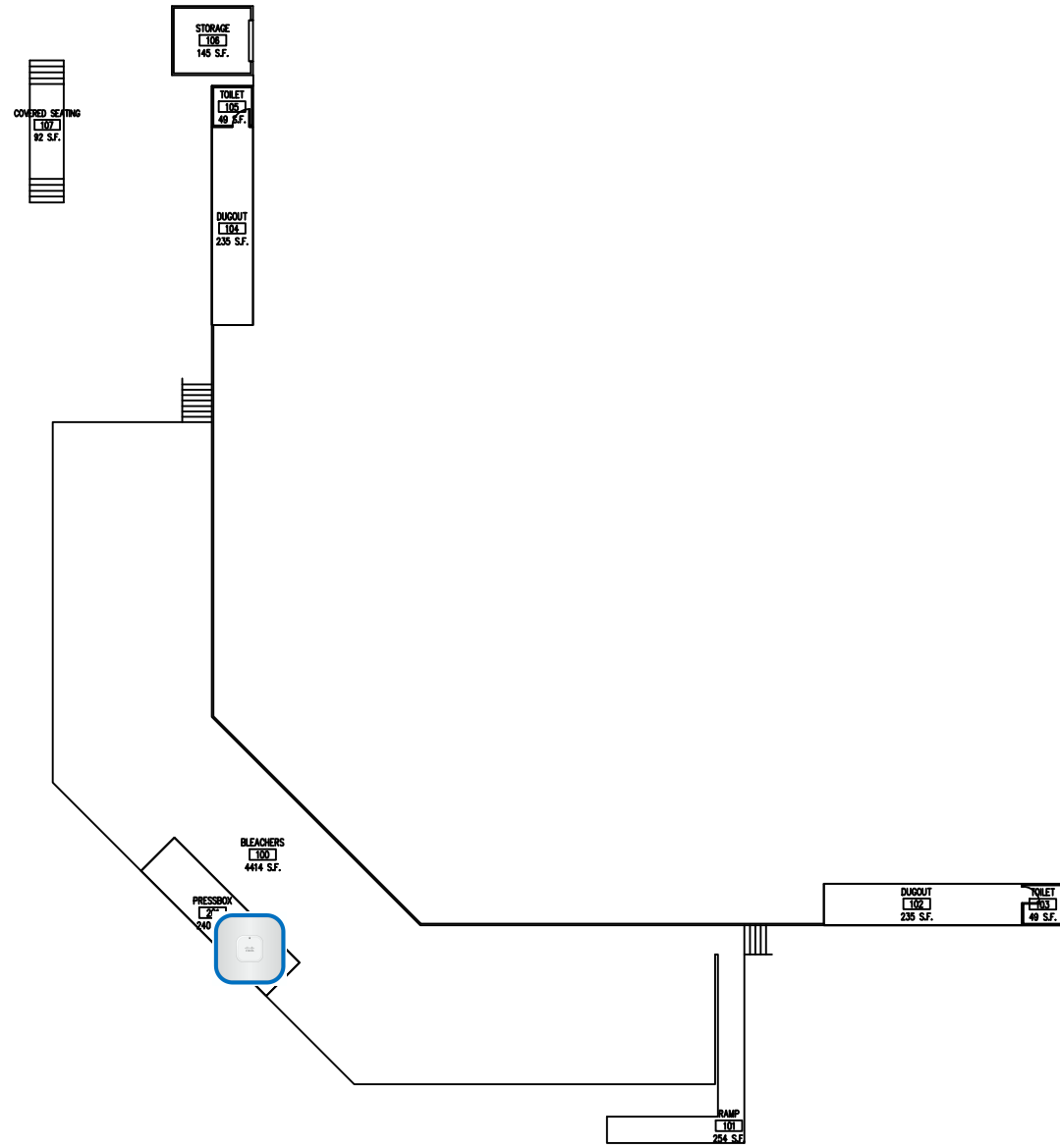


54 SF
NET ROOMS
9504 SF
GROSS AREA
9809 SF

FACILITIES PLANNING AND
CONSTRUCTION DIVISION

REVISED BY: AMBER REAMS
REVISION DATE: 04-26-13
SCALE: 1/16" = 1'-0"

AP - Pressbox



**FACILITY #26 (BC)
BASEBALL COMPLEX
FLOOR PLAN**

EXT. COVERED AREA FOR COLLEGE USE

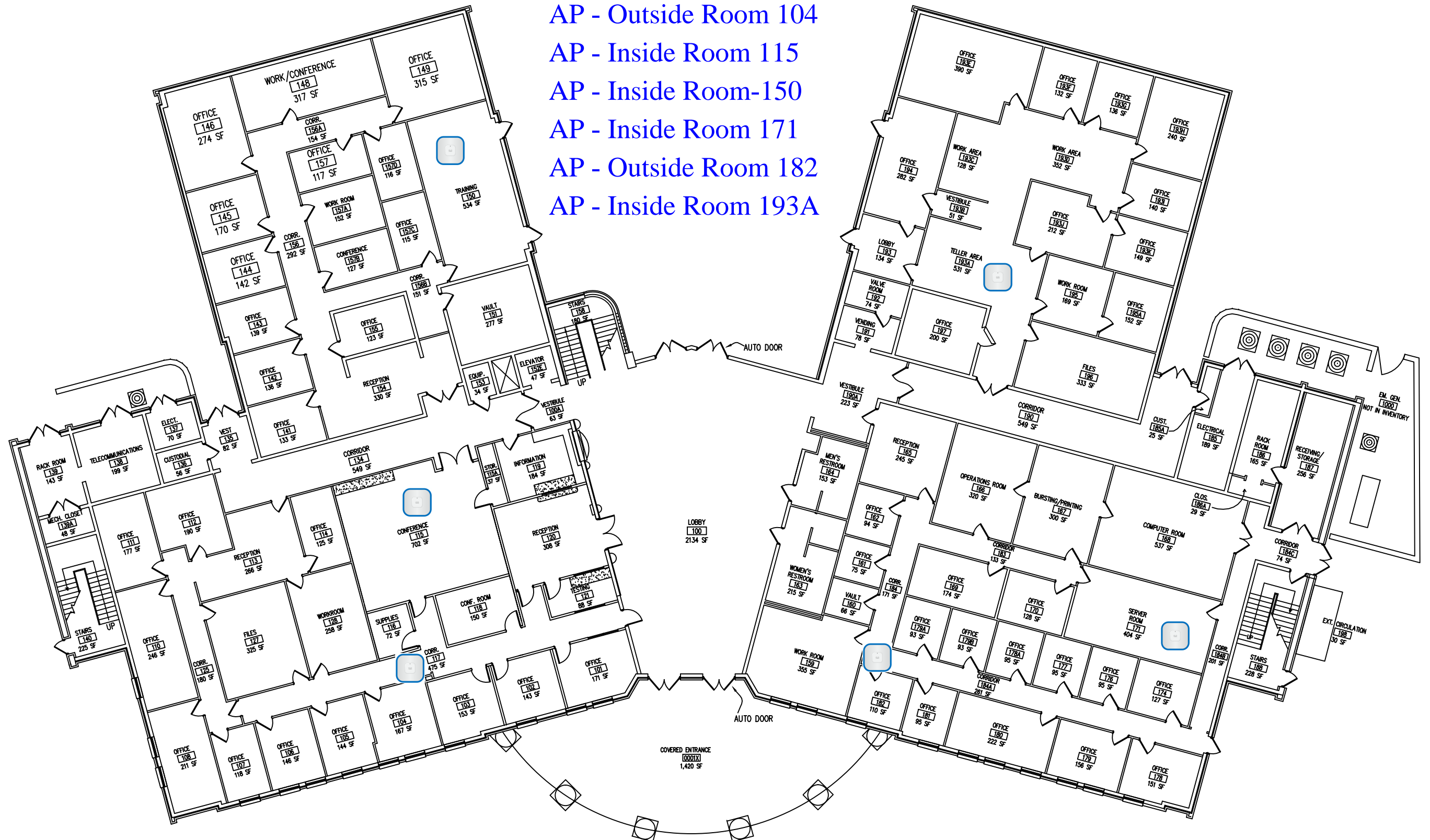


92 SF
NET ROOMS
1045 SF
GROSS AREA
1151 SF

FACILITIES PLANNING AND
CONSTRUCTION DIVISION

REVISED BY: AMBER REAMS
REVISION DATE: 05-02-13
SCALE: 1/32" = 1'-0"

- AP - Outside Room 104
- AP - Inside Room 115
- AP - Inside Room-150
- AP - Inside Room 171
- AP - Outside Room 182
- AP - Inside Room 193A



**FACILITY #27 (AD)
ADMINISTRATION BUILDING
1ST FLOOR PLAN**

EXT. COVERED AREA FOR COLLEGE USE

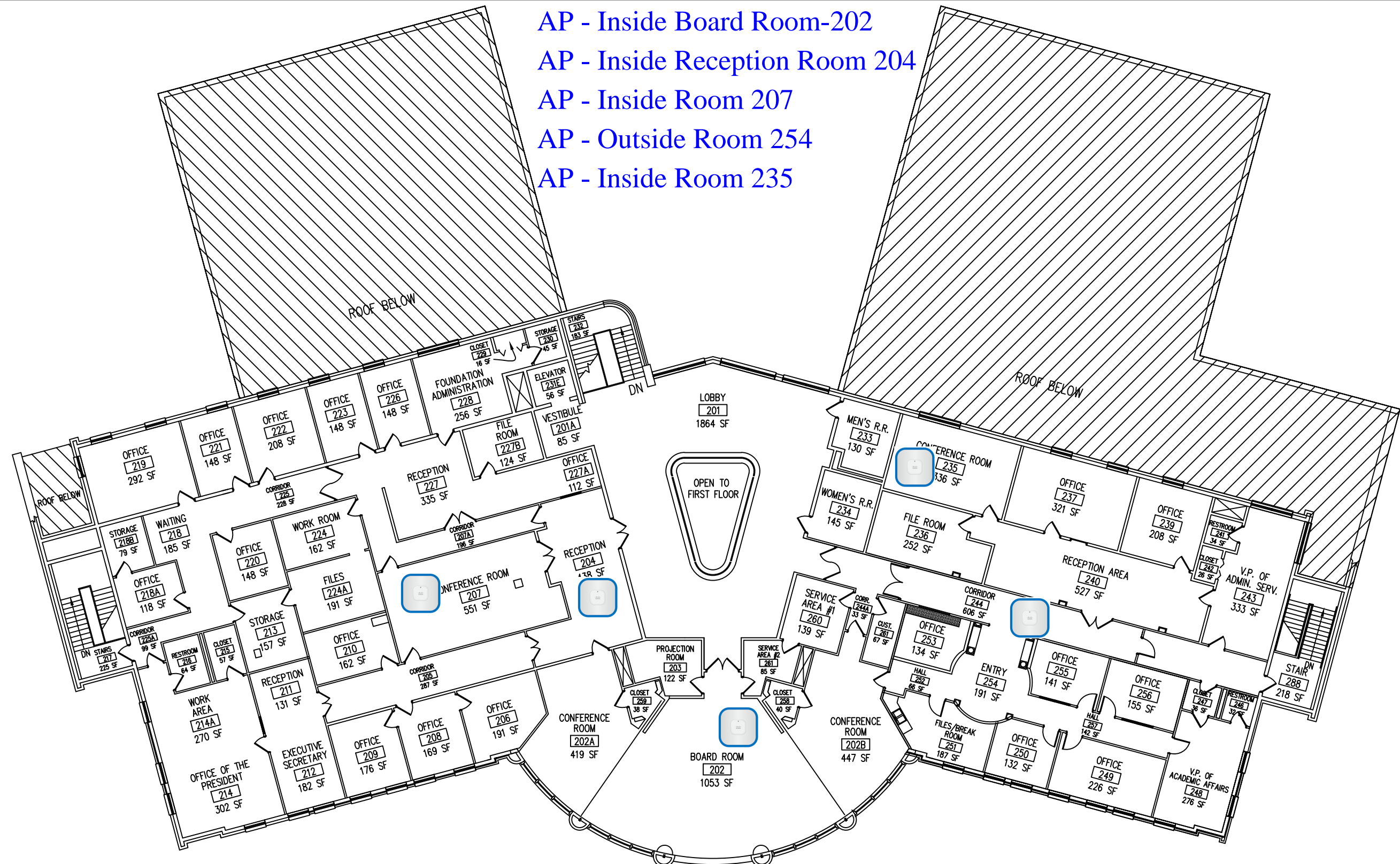
1501 SF
NET ROOMS
25324 SF
GROSS AREA
26220 SF



FACILITIES PLANNING AND
CONSTRUCTION DIVISION

REVISED BY: AMBER REAMS
REVISION DATE: 05-02-13
SCALE: NTS

- AP - Inside Board Room-202
- AP - Inside Reception Room 204
- AP - Inside Room 207
- AP - Outside Room 254
- AP - Inside Room 235



**FACILITY #27 (AD)
ADMINISTRATION BUILDING
2ND FLOOR PLAN**

EXT. COVERED AREA FOR COLLEGE USE

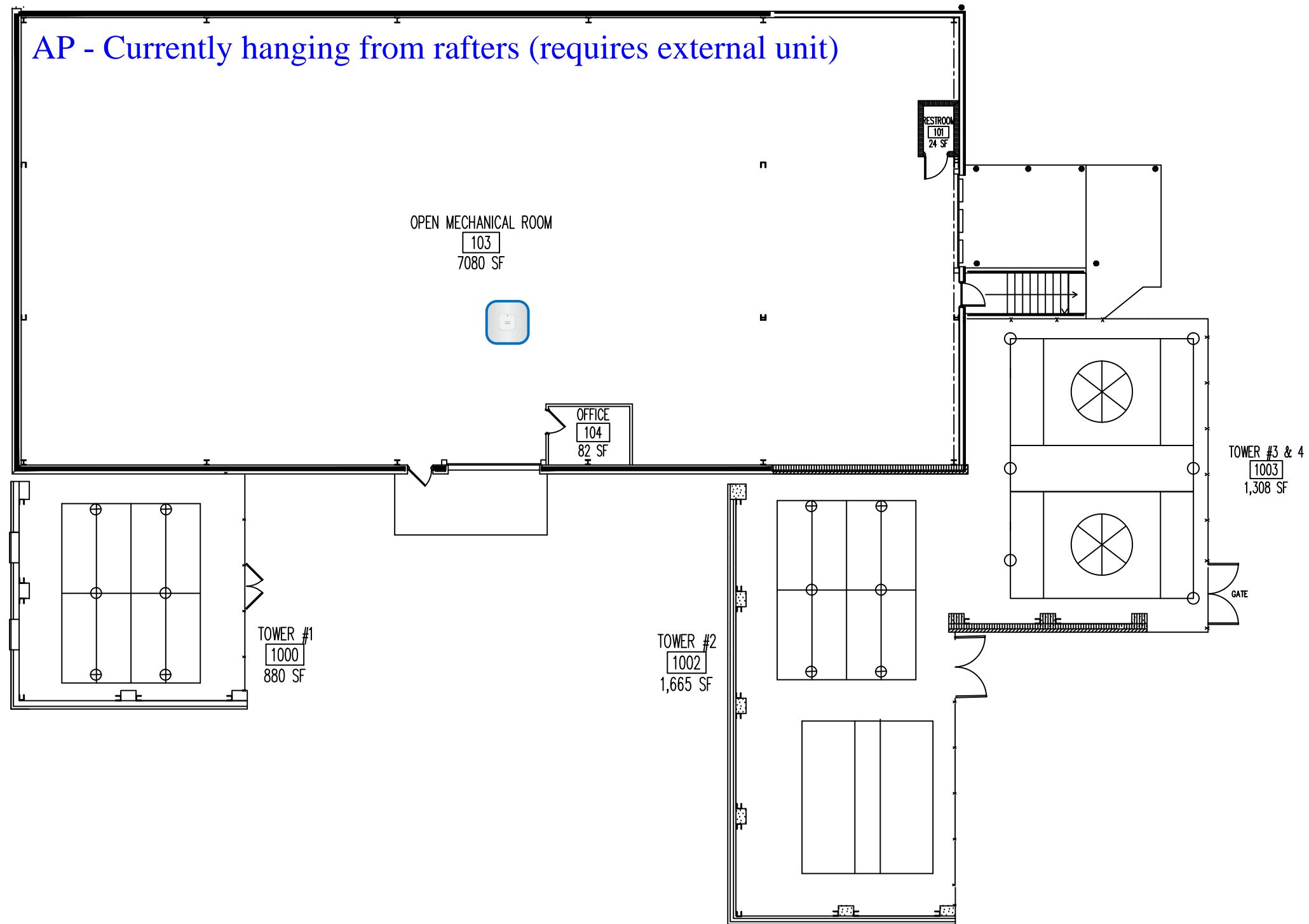
0 SF
NET ROOMS
 15433 SF
GROSS AREA
 17793 SF



FACILITIES PLANNING AND
CONSTRUCTION DIVISION

REVISED BY: AMBER REAMS
 REVISION DATE: 04-19-13
 SCALE: NTS

AP - Currently hanging from rafters (requires external unit)



FACILITY #28 (CU)
CENTRAL UTILITY PLANT
1ST FLOOR PLAN

EXT. COVERED AREA FOR COLLEGE USE

0 SF

NET ROOMS

7186 SF

GROSS AREA

7569 SF



FACILITIES PLANNING AND
CONSTRUCTION DIVISION

REVISED BY: AMBER REAMS

REVISION DATE: 04-26-13

SCALE: $\frac{1}{16}'' = 1'-0''$

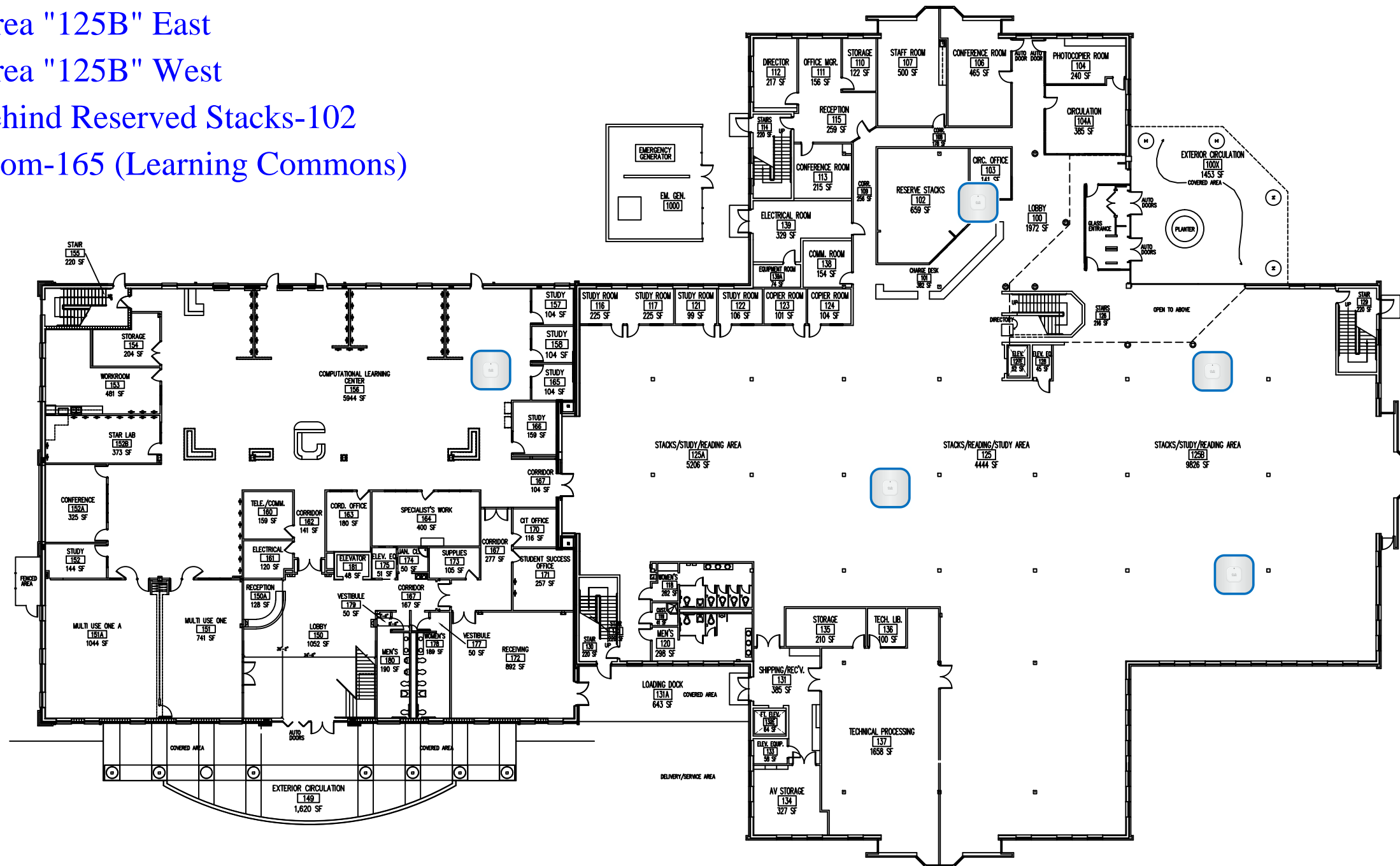
AP - Reading Area "125"

AP - Reading Area "125B" East

AP - Reading Area "125B" West

AP - Hallway behind Reserved Stacks-102

AP - Outside Room-165 (Learning Commons)



FACILITY #30 (LB)
LIBRARY-LEARNING COMMONS BUILDING
1ST FLOOR PLAN

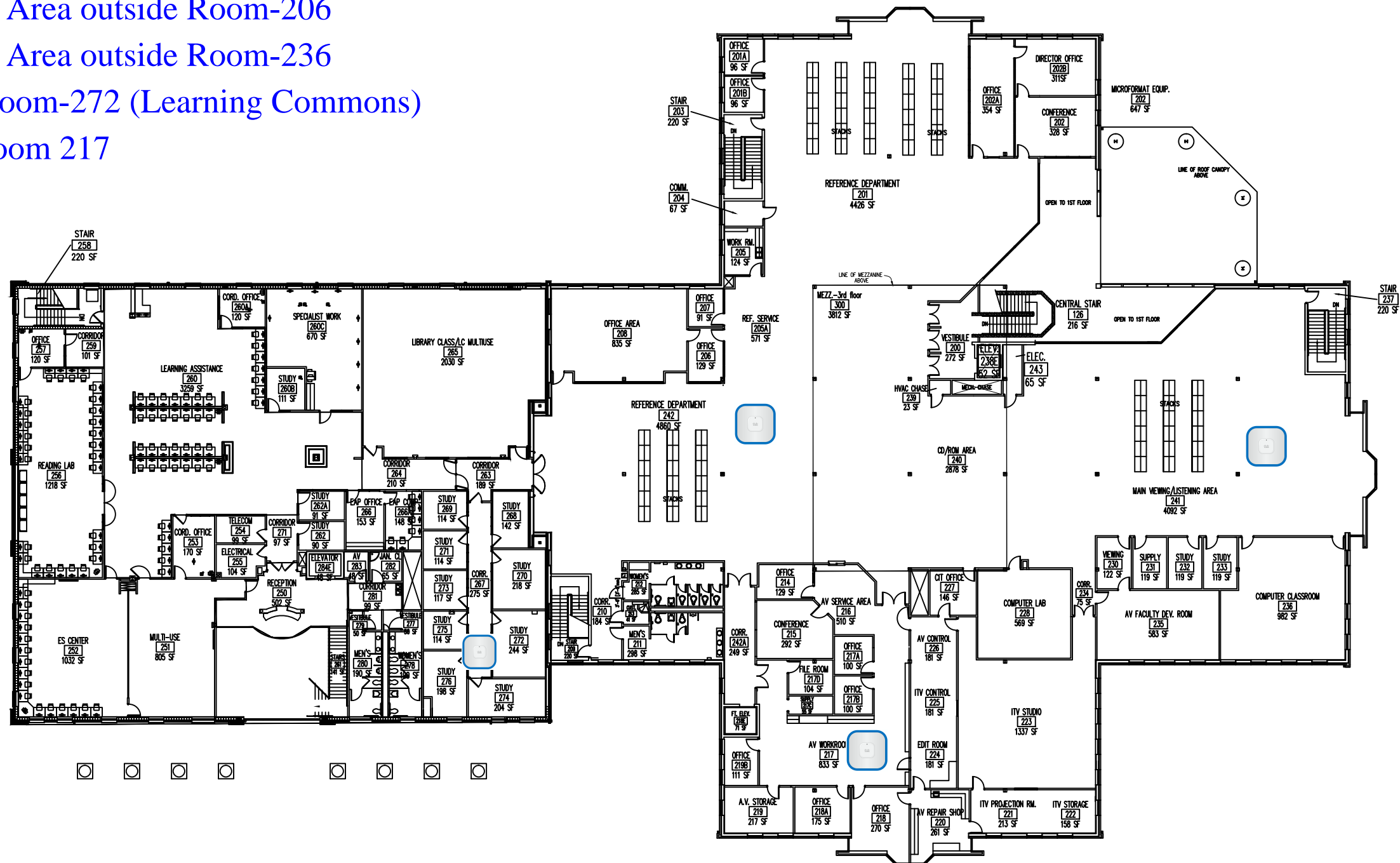
EXT. COVERED AREA FOR COLLEGE USE
 4359 SF
NET ROOMS
 49646 SF
GROSS AREA
 53300 SF



FACILITIES PLANNING AND
 CONSTRUCTION DIVISION

REVISED BY: AMBER REAMS
 REVISION DATE: 05-03-13
 SCALE: 1/32" = 1'-0"

- AP - Computer Area outside Room-206
- AP - Computer Area outside Room-236
- AP - Outside Room-272 (Learning Commons)
- AP - IT Workroom 217



FACILITY #30 (LB)
 LIBRARY-LEARNING COMMONS BUILDING
 2ND FLOOR

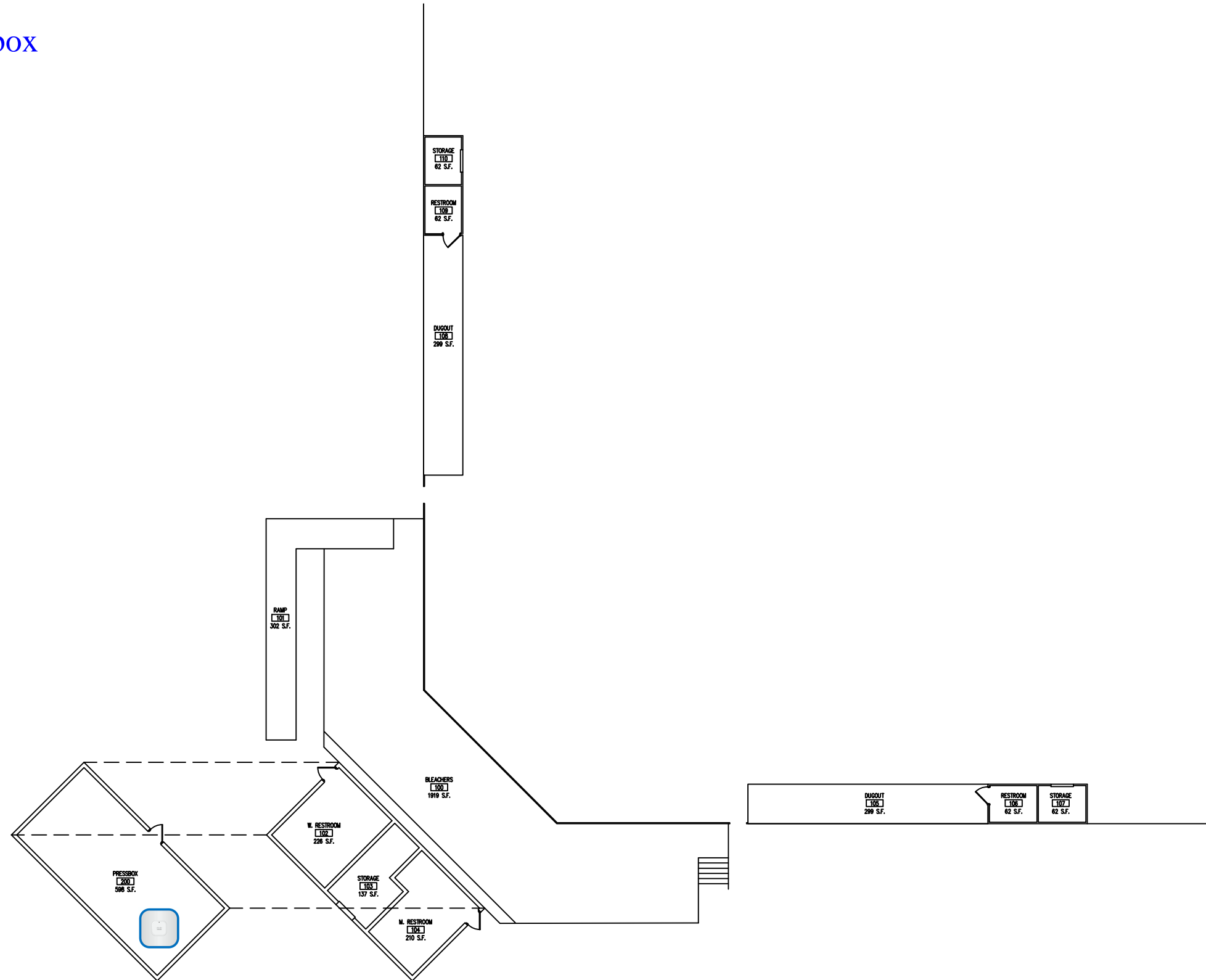
EXT. COVERED AREA FOR COLLEGE USE
 3812 SF
 NET ROOMS
 42865 SF
 GROSS AREA
 48902 SF



FACILITIES PLANNING AND
 CONSTRUCTION DIVISION

REVISED BY: JAMES MCGUIRE
 REVISION DATE: 11-23-2016
 SCALE: $\frac{1}{32}'' = 1'0''$

AP - Corner of Pressbox



**FACILITY #33 (SBF)
SOFTBALL FIELD
1ST FLOOR PLAN**

EXT. COVERED AREA FOR COLLEGE USE

0 SF

NET ROOMS

0 SF

GROSS AREA

40000 SF

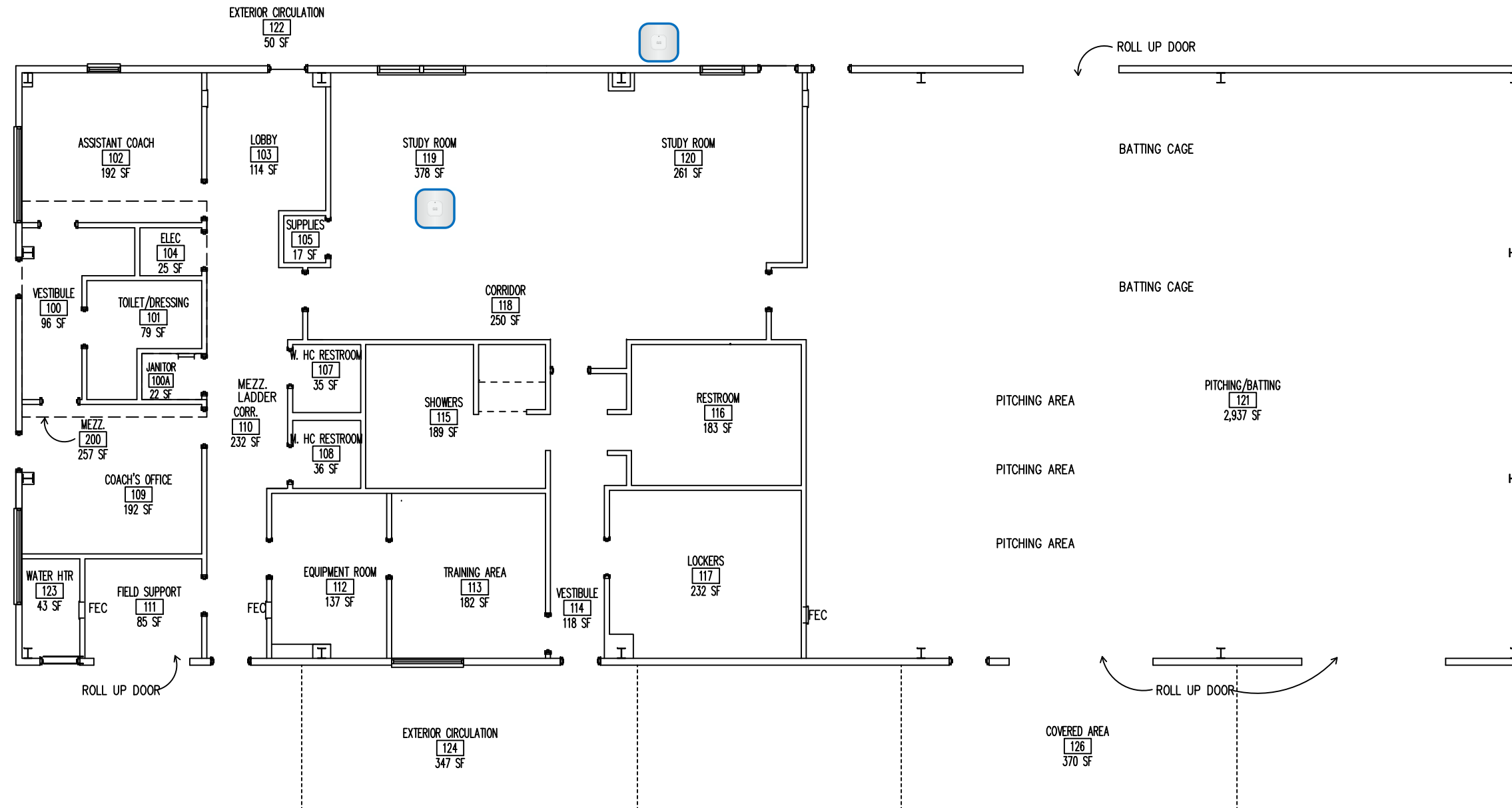


FACILITIES PLANNING AND
CONSTRUCTION DIVISION

REVISED BY: AMBER REAMS
REVISION DATE: 12-05-13
SCALE: NTS

AP - Players' Lounge / Study room 119

AP - External, unknown location



FACILITY #34 (SFH)
SOFTBALL FIELD HOUSE
1ST FLOOR PLAN



EXT. COVERED AREA FOR COLLEGE USE
 767 SF
NET ROOMS
 6759 SF
GROSS AREA
 7067 SF

FACILITIES PLANNING AND
 CONSTRUCTION DIVISION

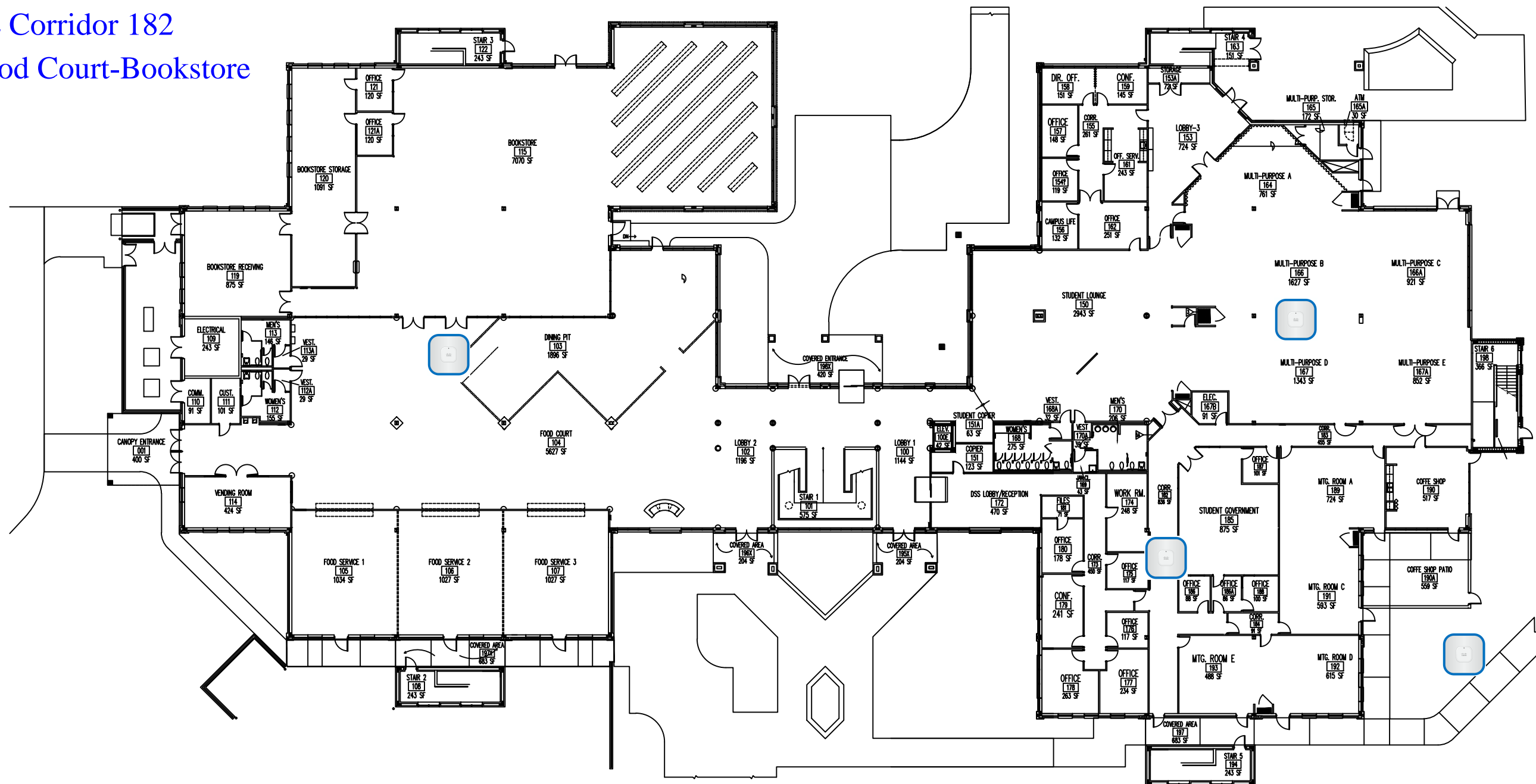
REVISED BY: AMBER REAMS
 REVISION DATE: 12-06-13
 SCALE: 3/32" = 1'-0"

AP - Inside "multipurpose" ballroom

AP - Outside SE building

AP - SE Corridor 182

AP - Food Court-Bookstore



FACILITY #35 (SU)
STUDENT UNION BUILDING
1ST FLOOR PLAN

EXT. COVERED AREA FOR COLLEGE USE
4612 SF
NET ROOMS
47316 SF
GROSS AREA
49803 SF



FACILITIES PLANNING AND
CONSTRUCTION DIVISION

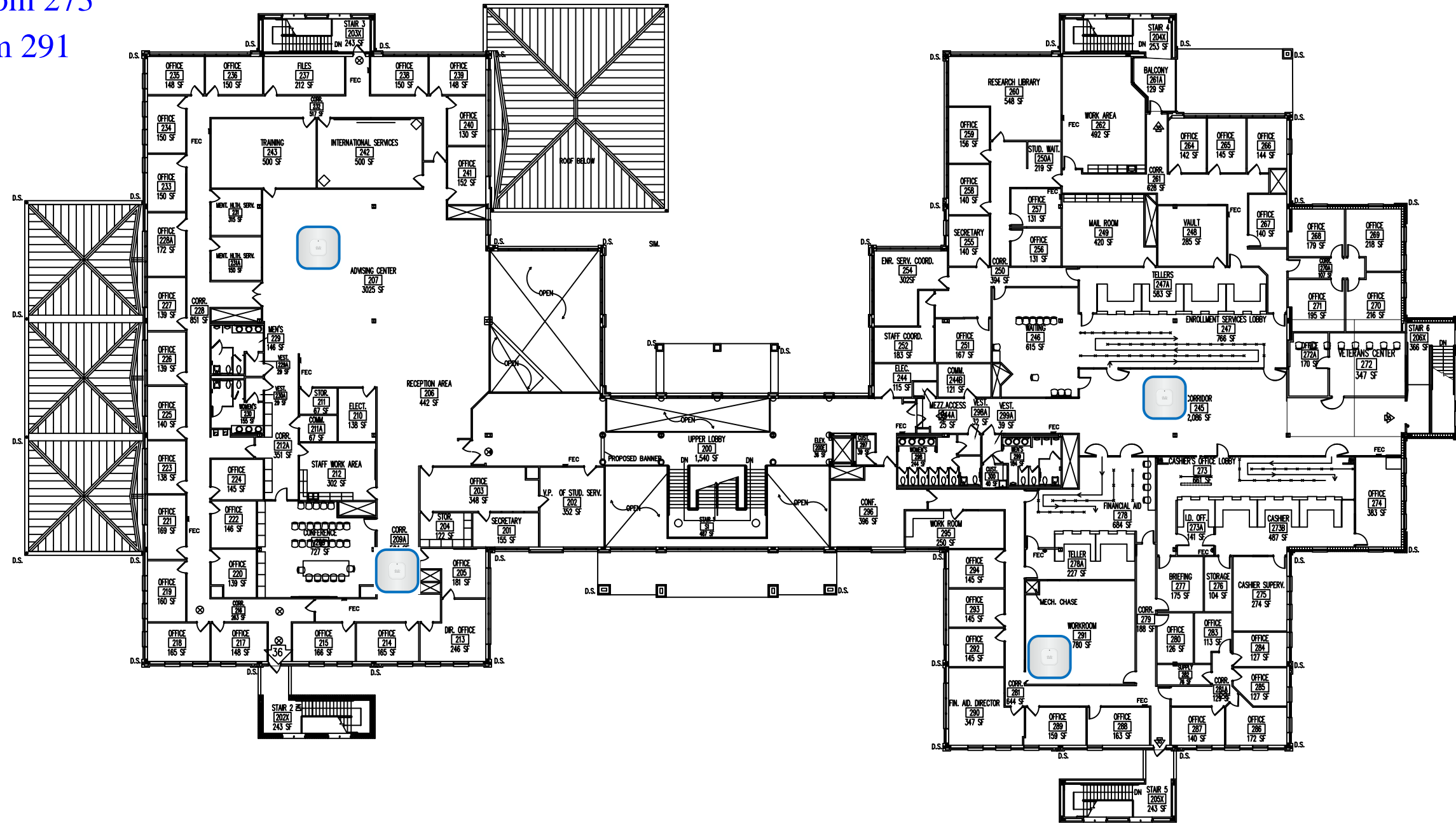
REVISED BY: AMBER REAMS
REVISION DATE: 05-02-13
SCALE: 1/32" = 1'-0"

AP - Corridor 206

AP - Inside room 207

AP - Outside room 273

AP - Inside room 291



FACILITY #35 (SU)
STUDENT UNION BUILDING
2ND FLOOR PLAN

EXT. COVERED AREA FOR COLLEGE USE

0 SF

NET ROOMS

40529 SF

GROSS AREA

42341 SF

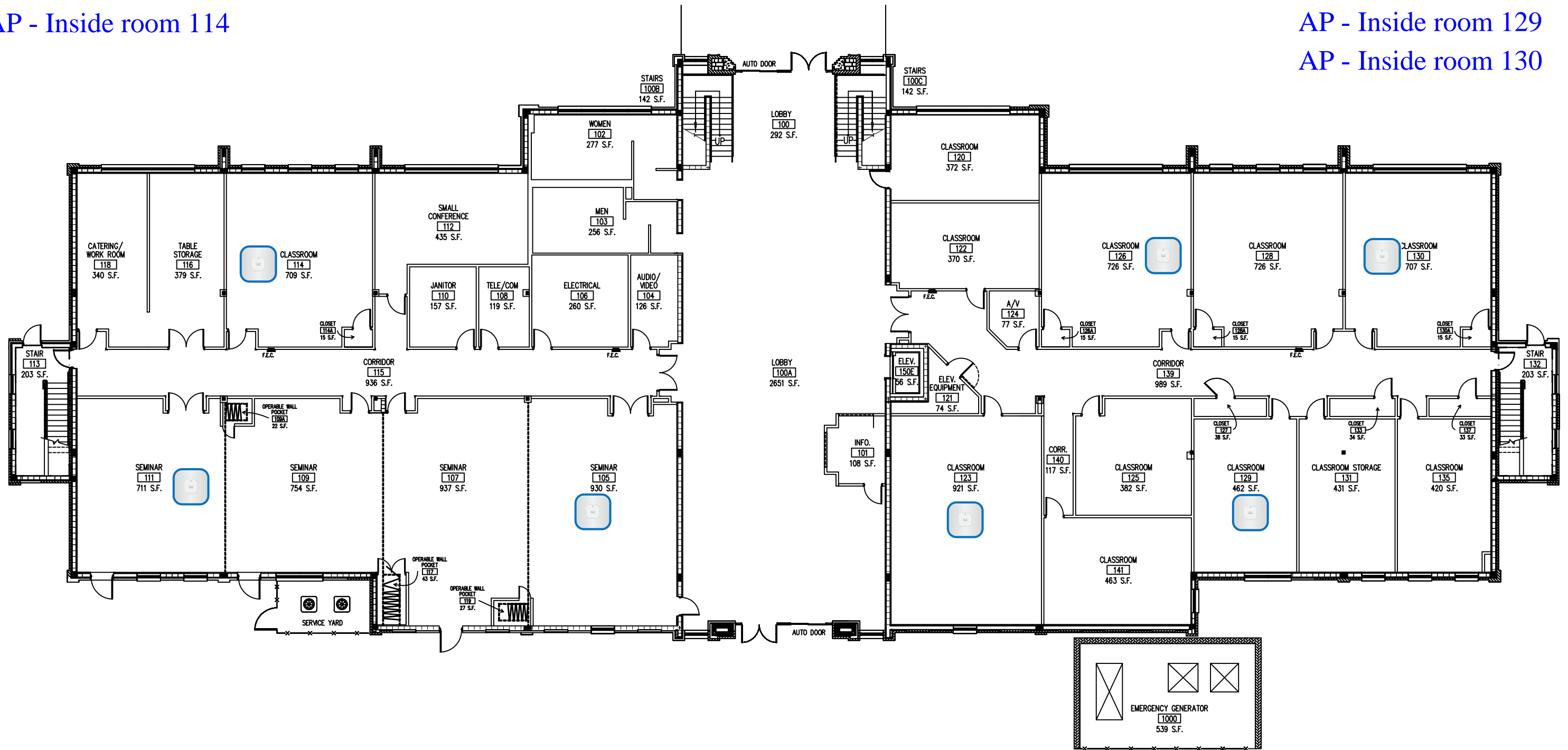


FACILITIES PLANNING AND
 CONSTRUCTION DIVISION

REVISED BY: JAMES MCGUIRE
 REVISION DATE: 09-26-2016
 SCALE: 1/32" = 1'-0"

AP - Inside room 105
 AP - Inside room 111
 AP - Inside room 114

AP - Inside room 123
 AP - Inside room 126
 AP - Inside room 129
 AP - Inside room 130



**FACILITY #38 (WD)
 CENTER FOR WORKFORCE DEVELOPMENT
 1ST FLOOR PLAN**

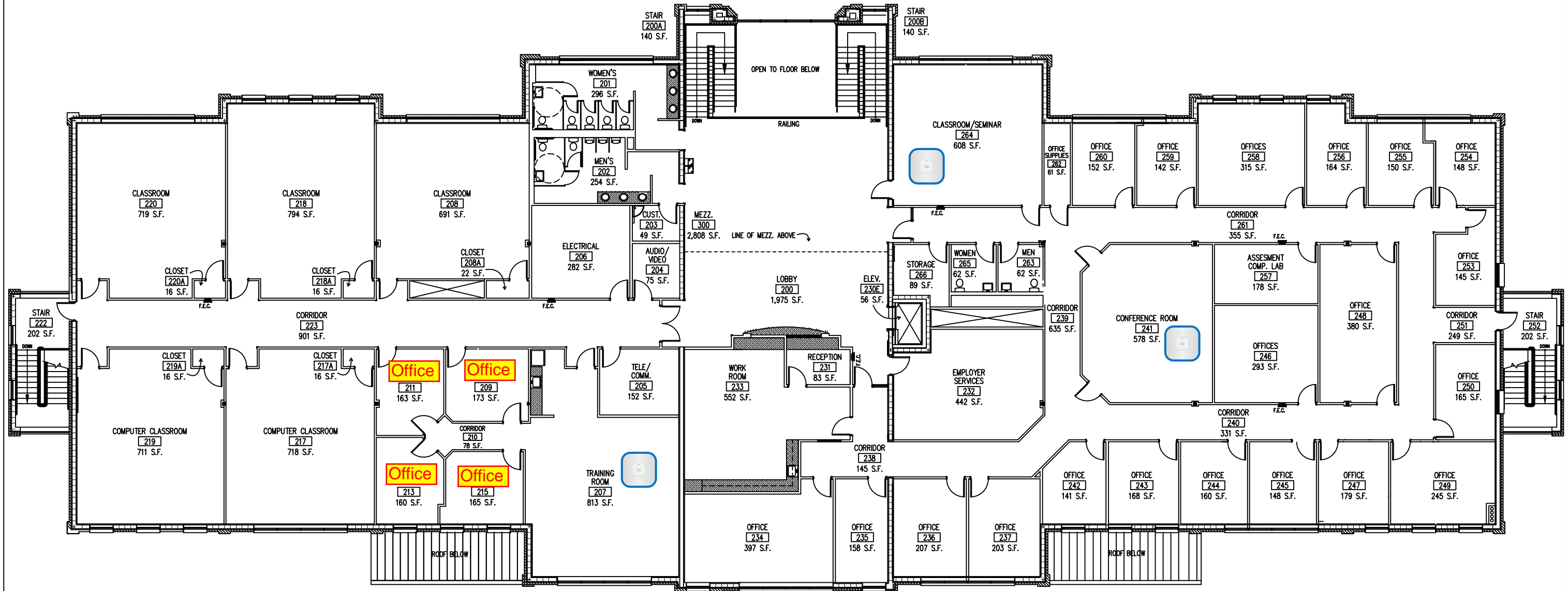
EXT. COVERED AREA FOR COLLEGE USE
 406 SF
NET ROOMS
 18617 SF
GROSS AREA
 20375 SF



FACILITIES PLANNING AND
 CONSTRUCTION DIVISION

 REVISED BY: AMBER REAMS
 REVISION DATE: 04-26-13
 SCALE: NTS

AP - Inside room 207
 AP - Inside room 241
 AP - Inside room 264



FACILITY #38 (WD)
CENTER FOR WORKFORCE DEVELOPMENT
2ND FLOOR PLAN

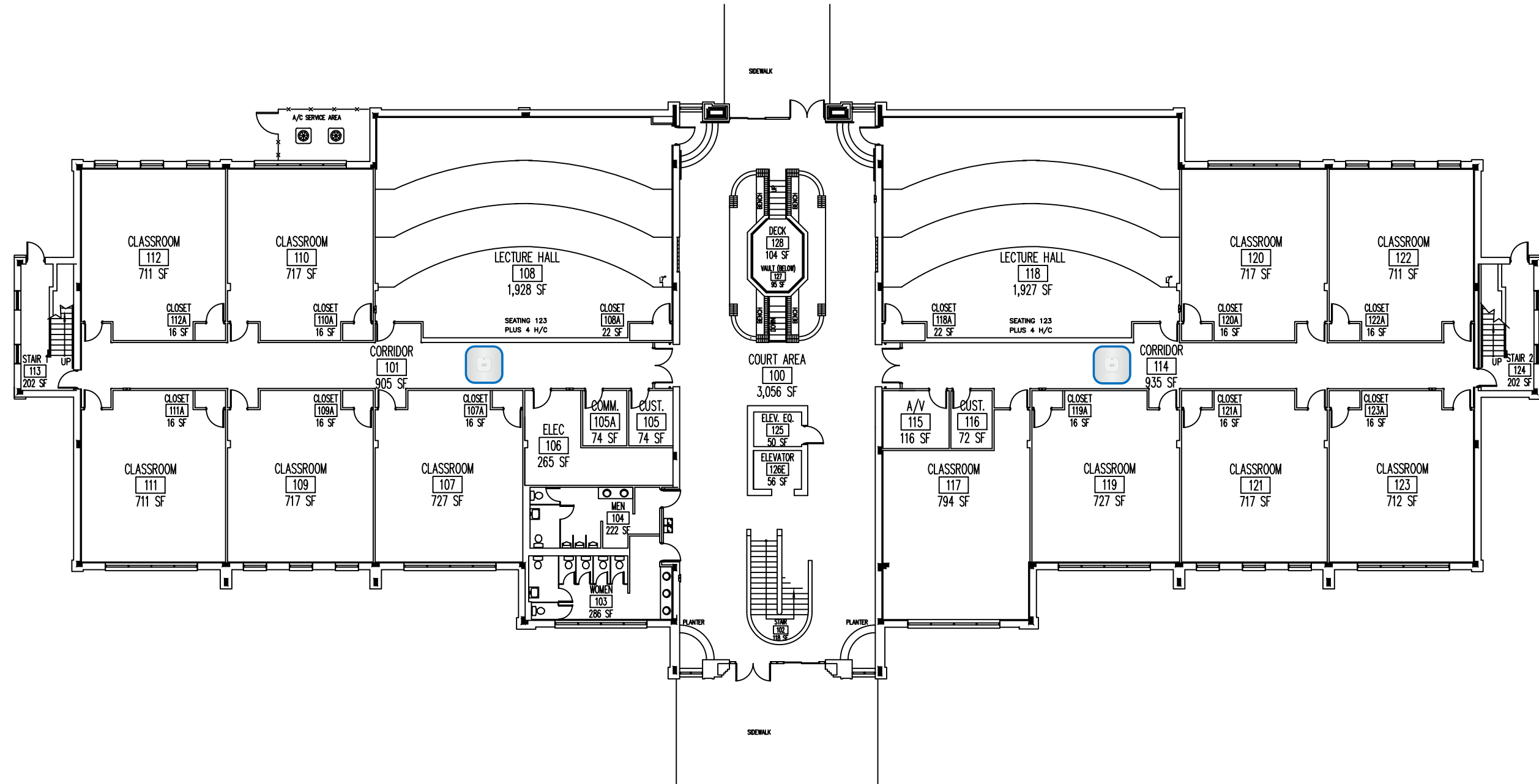
EXT. COVERED AREA FOR COLLEGE USE
 404 SF
 NET ROOMS
 18485 SF
 GROSS AREA
 20109 SF



FACILITIES PLANNING AND
 CONSTRUCTION DIVISION
 REVISED BY: AMBER REAMS
 REVISION DATE: 04-26-13
 SCALE: NTS

AP - Hallway outside room 107

AP - Hallway outside room 118



FACILITY #39 (HSS)
WETHERELL HISTORY AND SOCIAL SCIENCE BLDG.
1ST FLOOR PLAN

EXT. COVERED AREA FOR COLLEGE USE

404 SF

NET ROOMS

18734 SF

GROSS AREA

20417 SF



FACILITIES PLANNING AND
 CONSTRUCTION DIVISION

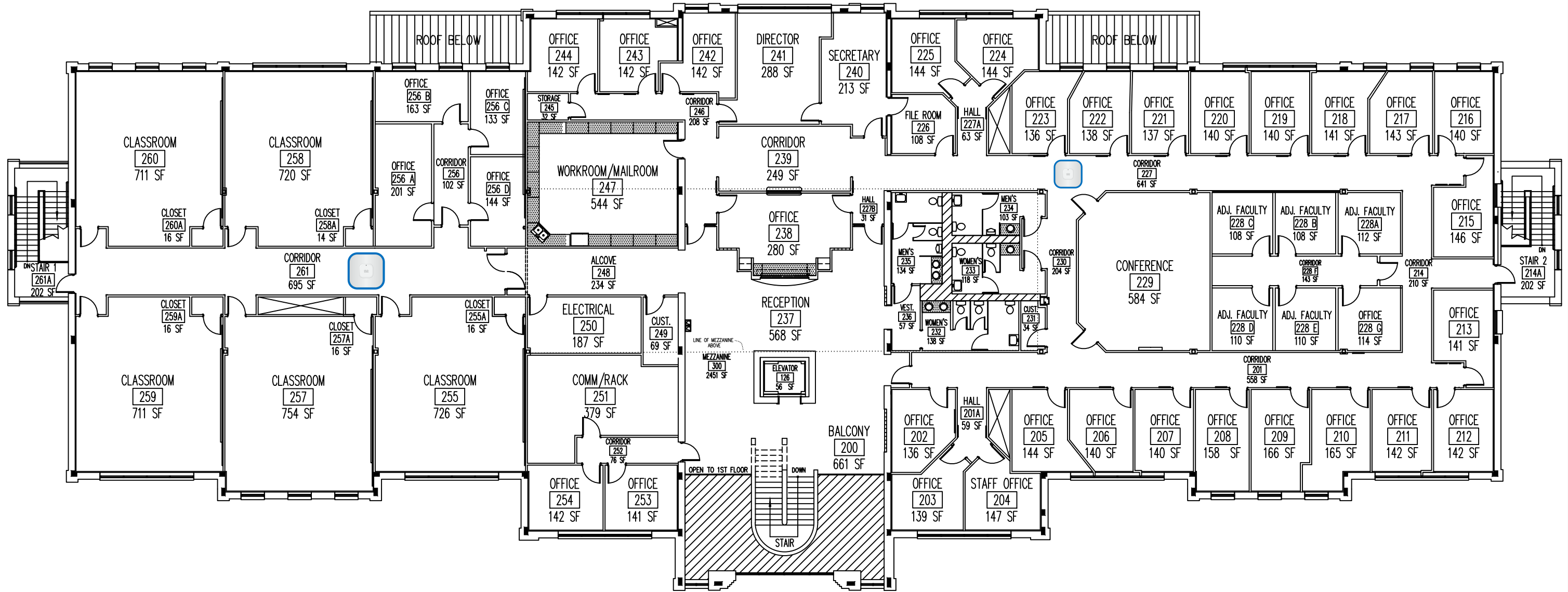
REVISED BY: AMBER REAMS

REVISION DATE: 04-26-13

SCALE: NTS

AP - Hallway outside room 223

AP - Hallway outside room 255



FACILITY #39 (HSS)
WETHERELL HISTORY AND SOCIAL SCIENCE BLDG.
2ND FLOOR PLAN

EXT. COVERED AREA FOR COLLEGE USE
 404 SF
NET ROOMS
 17253 SF
GROSS AREA
 20109 SF
MEZZANINE AREA
 2451 SF

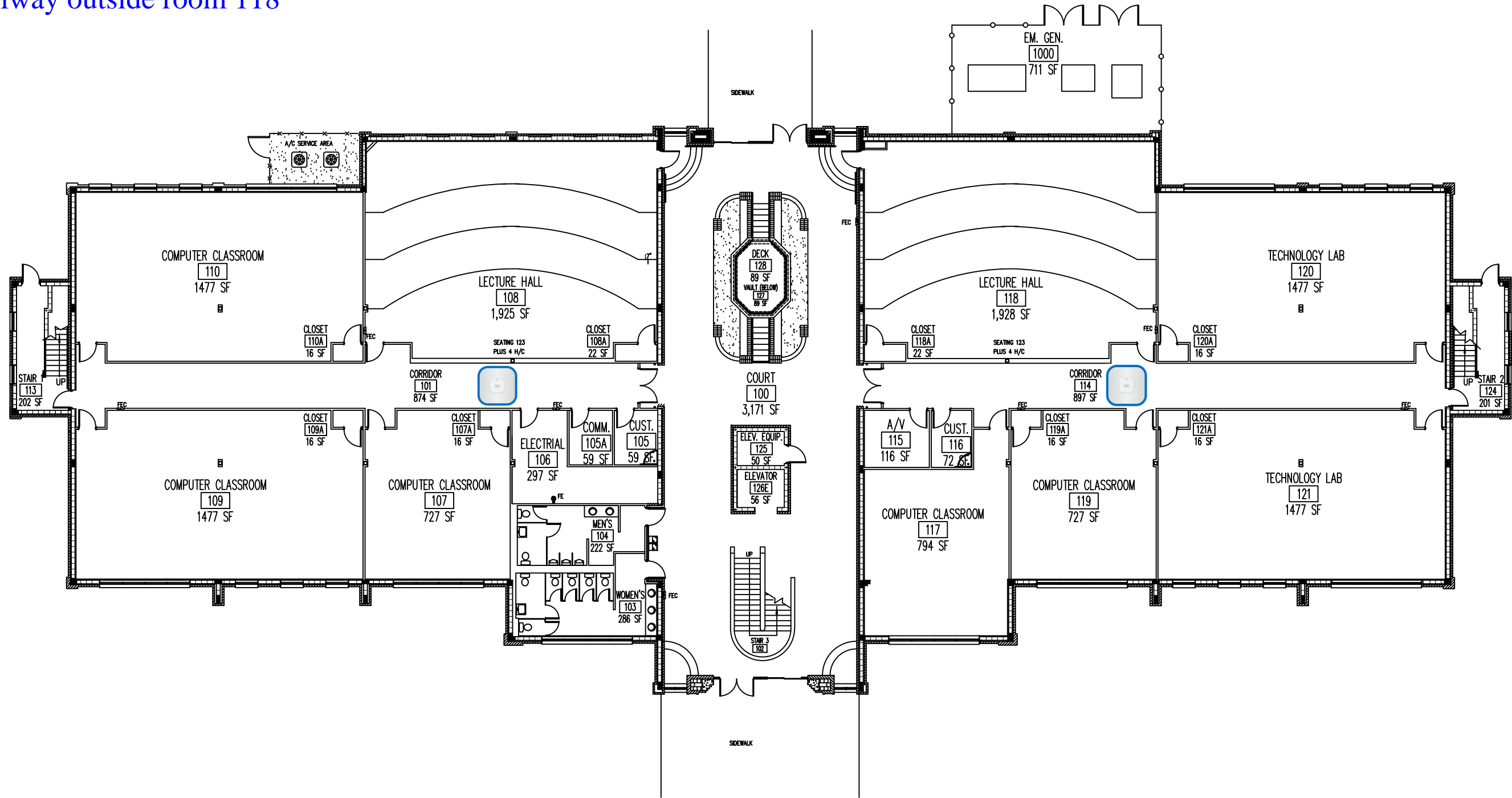


FACILITIES PLANNING AND
 CONSTRUCTION DIVISION

REVISED BY: AMBER REAMS
 REVISION DATE: 04-26-13
 SCALE: NTS

AP - Hallway outside room 107

AP - Hallway outside room 118



FACILITY #41 (CT)
COMPUTER TECHNOLOGY BUILDING
1ST FLOOR PLAN

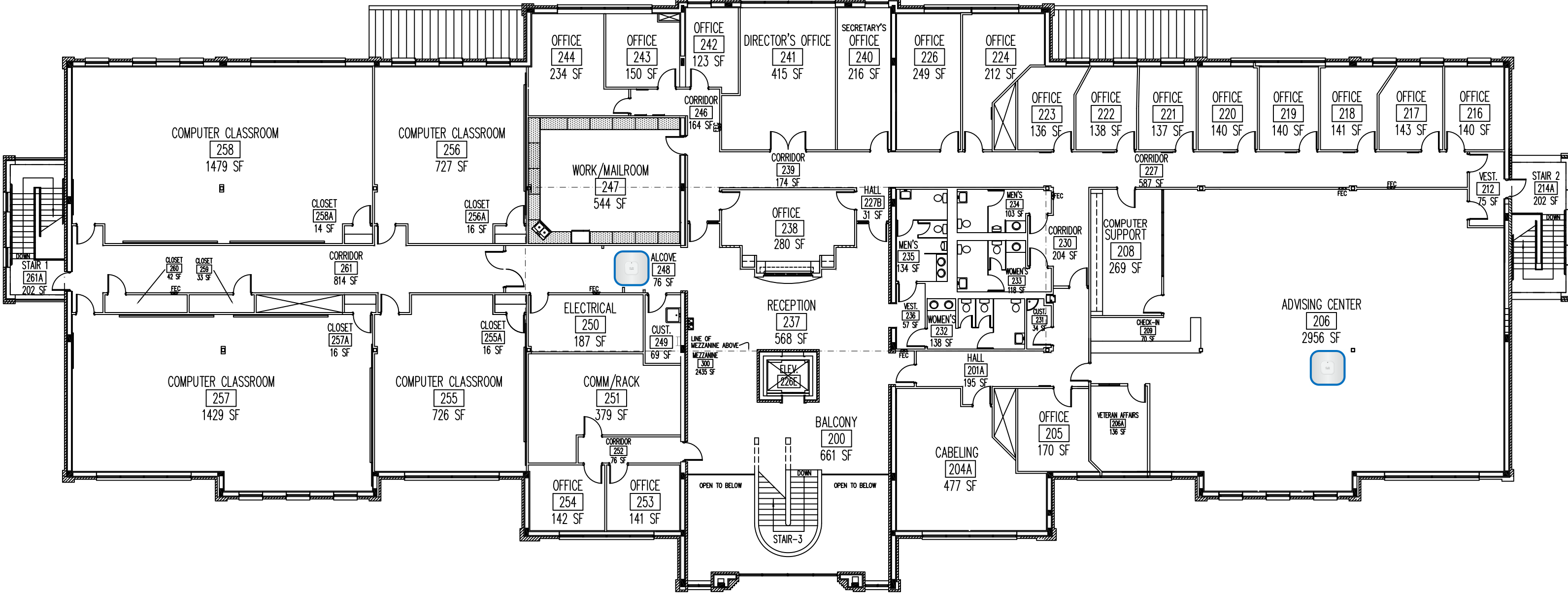
EXT. COVERED AREA FOR COLLEGE USE
403 SF
NET ROOMS
18889 SF
GROSS AREA
20417 SF



FACILITIES PLANNING AND
CONSTRUCTION DIVISION

REVISED BY: AMBER REAMS
REVISION DATE: 04-26-13
SCALE: NTS

AP - Hallway inside room 206
 AP - Hallway outside room 249
 AP - External Unit (South side?)



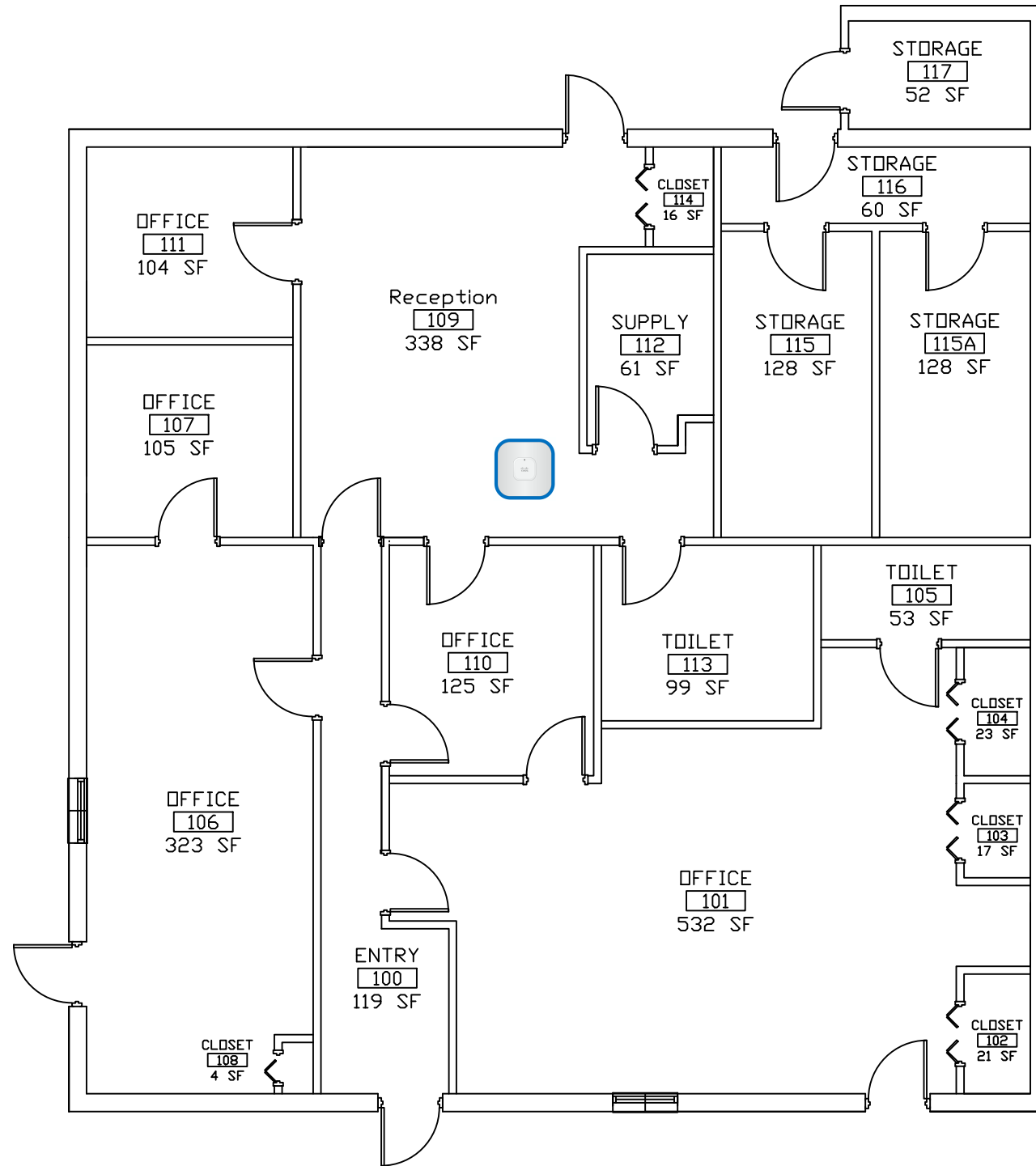
FACILITY #41 (CT)
COMPUTER TECHNOLOGY BUILDING
2ND FLOOR PLAN

EXT. COVERED AREA FOR COLLEGE USE
 404 SF
 NET ROOMS
 20127 SF
 GROSS AREA
 20109 SF



FACILITIES PLANNING AND
 CONSTRUCTION DIVISION
 REVISED BY: AMBER REAMS
 REVISION DATE: 04-26-13
 SCALE: NTS

AP - Reception Area Room 109



**FACILITY #50 (CIAT)
CONSTRUCTION INDUSTRIAL APPLIED
TECHNOLOGY BUILDING
1ST FLOOR PLAN**

EXT. COVERED AREA FOR COLLEGE USE

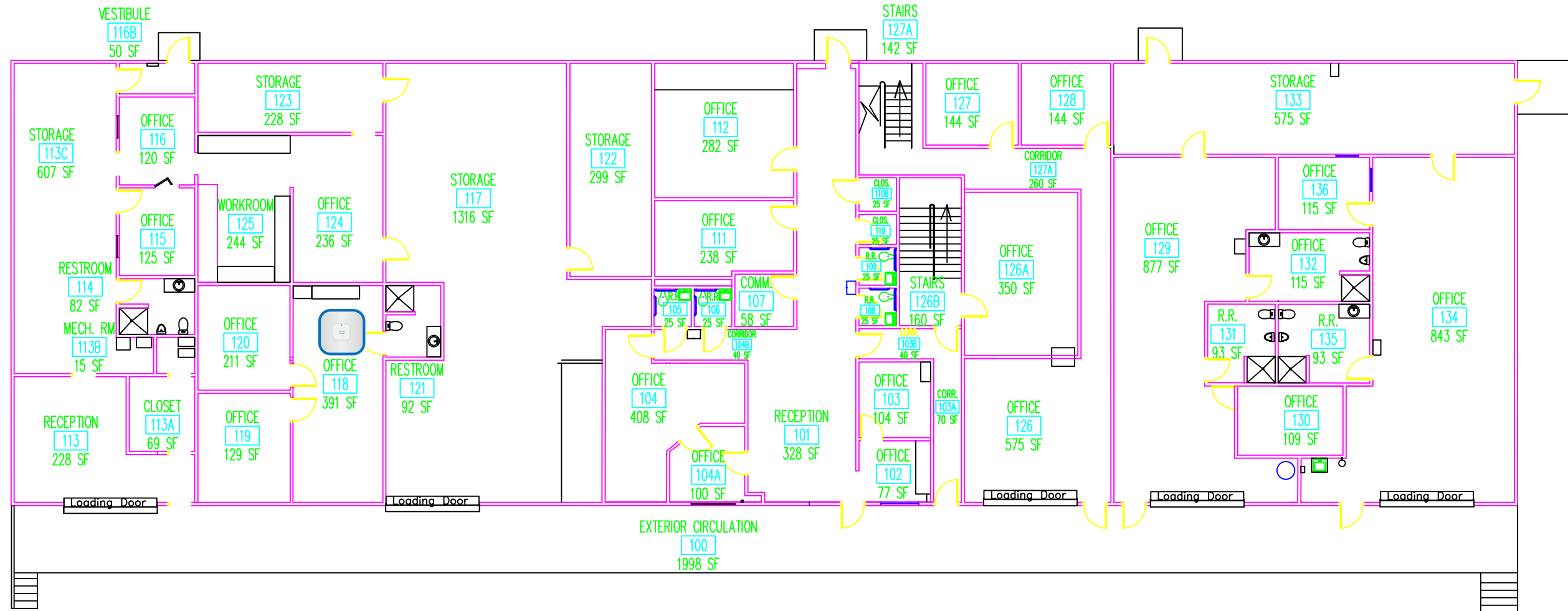
0 SF
 NET ROOMS
 2256 SF
 GROSS AREA
 2550 SF



FACILITIES PLANNING AND
CONSTRUCTION DIVISION

REVISED BY: JAMES MCGUIRE
 REVISION DATE: 12-12-2016
 SCALE: 1/8" = 1'-0"

AP - Inside conference room 118



**FACILITY #54 (VB)
VACANT BUILDING
1ST FLOOR PLAN**

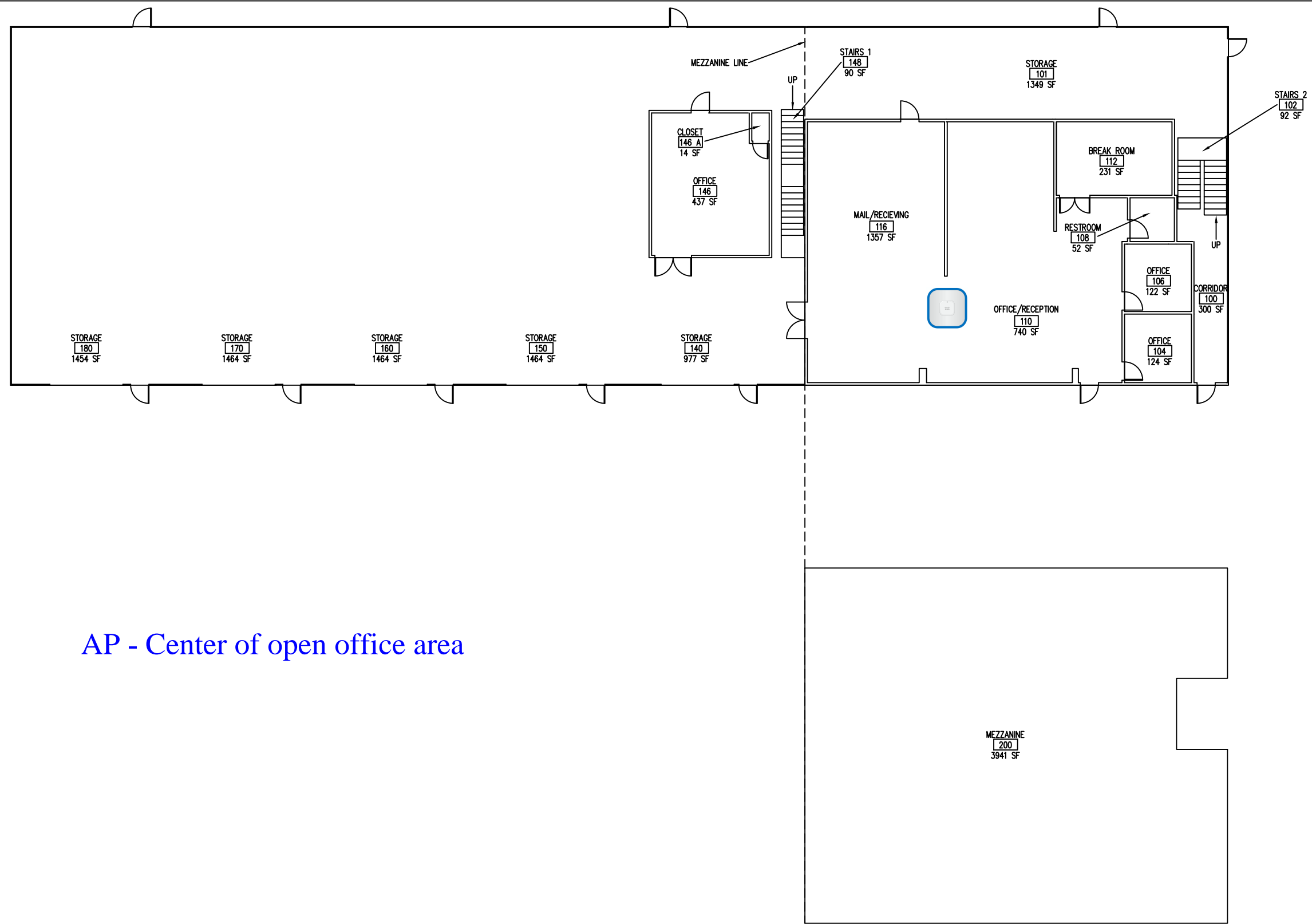
EXT. COVERED AREA FOR COLLEGE USE



0 SF
NET ROOMS
12670 SF
GROSS AREA
13806 SF

**FACILITIES PLANNING AND
CONSTRUCTION DIVISION**

REVISED BY: AMBER REAMS
REVISION DATE: 12-09-13
SCALE: 1/16" = 1'-0"



AP - Center of open office area



FACILITY #57 (MR)
 MAILROOM SHIPPING AND RECEIVING BUILDING
 1ST FLOOR PLAN AND MEZZANINE LEVEL

EXT. COVERED AREA FOR COLLEGE USE

0 SF

NET ROOMS

15200 SF

GROSS AREA

16230 SF



FACILITIES PLANNING AND
 CONSTRUCTION DIVISION

REVISED BY: AMBER REAMS

REVISION DATE: 12-09-13

SCALE: NTS



Ghazvini Center for Healthcare Education

1528 Surgeons Drive
Tallahassee, FL 32308

- AP - Inside reception room 100
- AP - Hallway outside room 121
- AP - Hallway outside room 127
- AP - Hallway outside room 131



**FACILITY #1 (GCHE)
GHAZVINI CENTER FOR HEALTHCARE
EDUCATION
1ST FLOOR PLAN**

EXT. COVERED AREA FOR COLLEGE USE

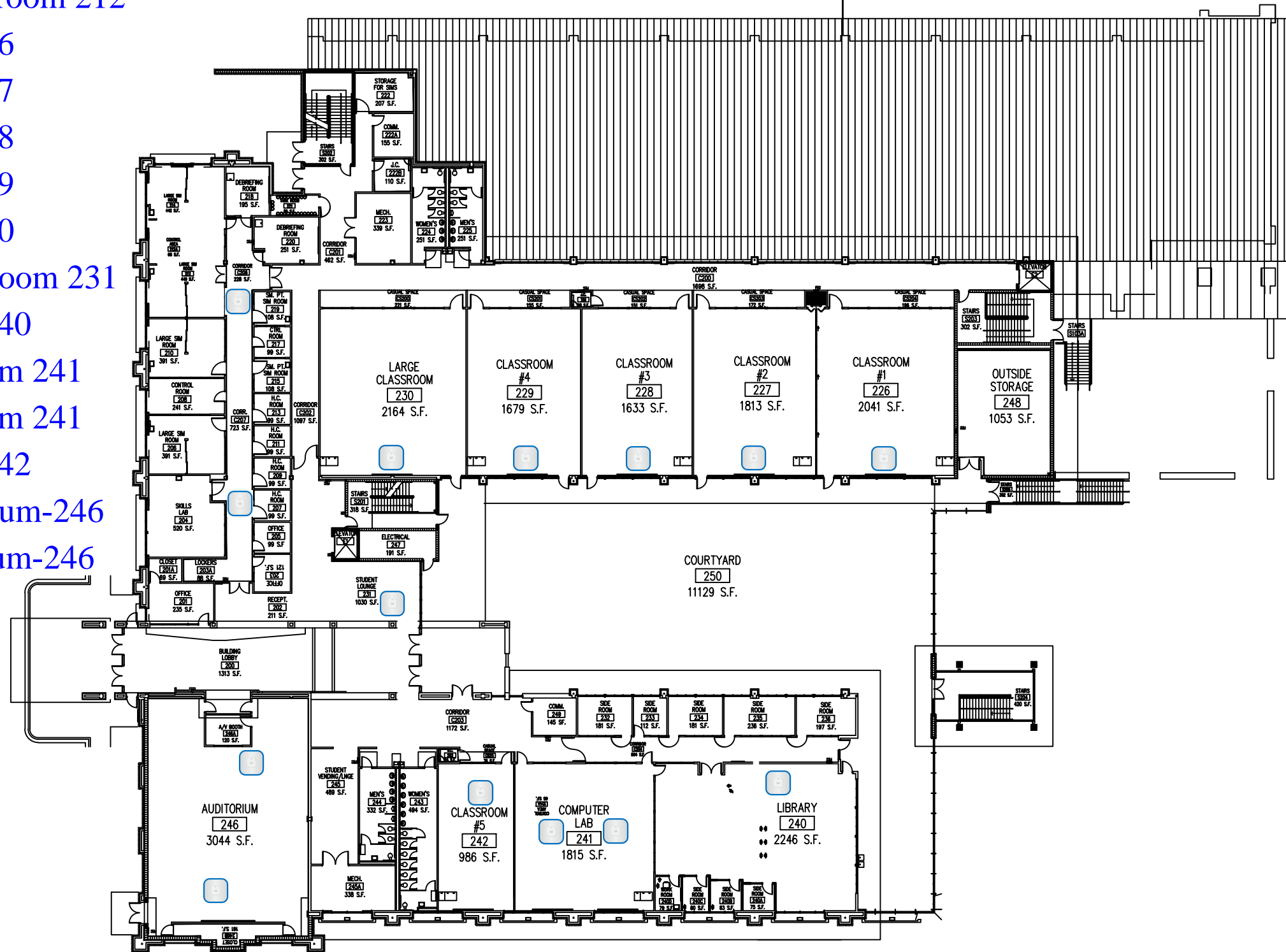


0 SF
NET ROOMS
-- SF
GROSS AREA
59062 SF

FACILITIES PLANNING AND
CONSTRUCTION DIVISION

REVISED BY: AMBER REAMS
REVISION DATE: 12-05-13
SCALE: 1/4" = 1'-0"

- AP - Hallway outside room 207
- AP - Hallway outside room 212
- AP - Front of room 226
- AP - Front of room 227
- AP - Front of room 228
- AP - Front of room 229
- AP - Front of room 230
- AP - Center of lobby/room 231
- AP - Center of room 240
- AP - North side of room 241
- AP - South side of room 241
- AP - Center of room 242
- AP - Front of Auditorium-246
- AP - Rear of Auditorium-246



**FACILITY #1 (GCHE)
GHAZVINI CENTER FOR HEALTHCARE
EDUCATION
2ND FLOOR PLAN**

EXT. COVERED AREA FOR COLLEGE USE

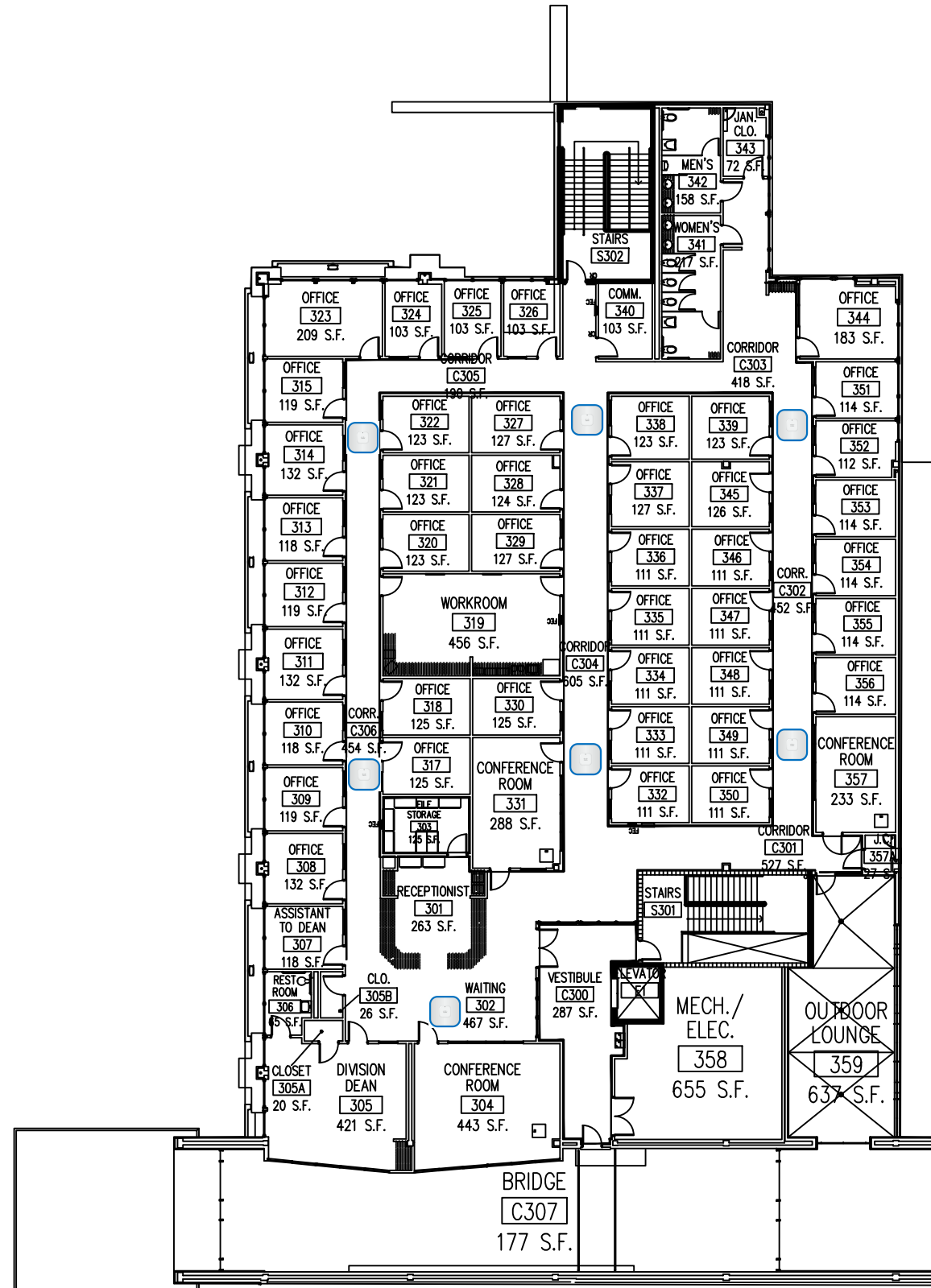
0 SF
NET ROOMS
48721 SF
GROSS AREA
-- SF



FACILITIES PLANNING AND
CONSTRUCTION DIVISION

REVISED BY: AMBER REAMS
REVISION DATE: 12-05-13
SCALE: NTS

- AP - Hallway outside room 304
- AP - Hallway outside room 310
- AP - Hallway outside room 322
- AP - Hallway outside room 327
- AP - Hallway outside room 331
- AP - Hallway outside room 339
- AP - Hallway outside room 349



**FACILITY # 1 (GCHE)
 GHAZVINI CENTER FOR HEALTHCARE
 EDUCATION
 3RD FLOOR PLAN**

EXT. COVERED AREA FOR COLLEGE USE



0 SF
 NET ROOMS
 13100 SF
 GROSS AREA
 13545 SF

FACILITIES PLANNING AND
 CONSTRUCTION DIVISION
 REVISED BY: AMBER REAMS
 REVISION DATE: 12-05-13
 SCALE: NTS



Center for Innovation

300 West Pensacola Street

Tallahassee, FL 32301

AP - Classroom B108
 AP - Atrium

C:\Users\hunter\Desktop\Official TCC Logo copy.jpg



CAPITAL CENTER
 TCC Level

Tallahassee Community College (850) 201-8011

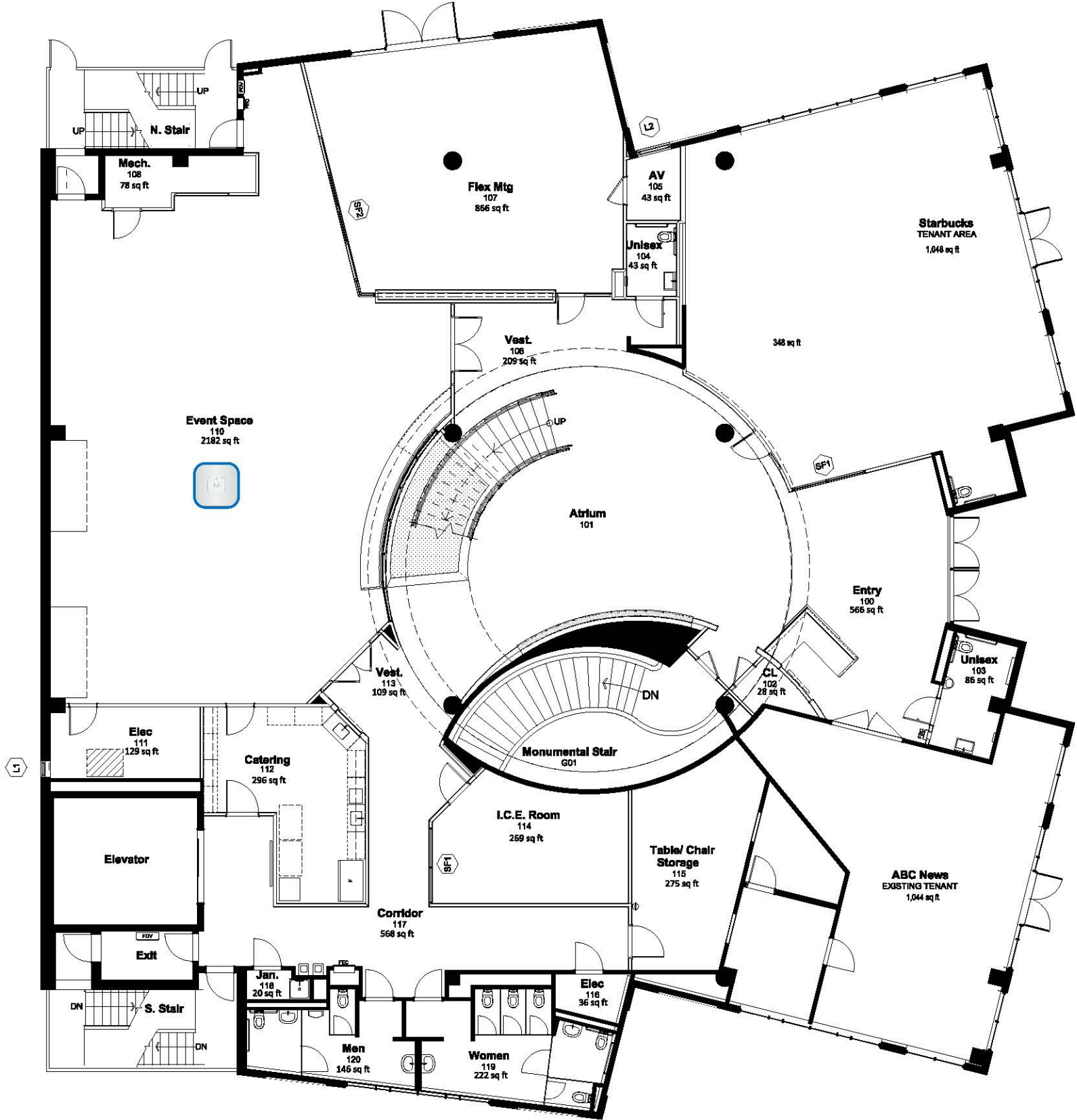
Drawn by:
 Date:
 Revised: 05/21/2015

Sheet number

0

Not to Scale

AP - Center of "Event Space"



CENTER FOR INNOVATION
First Floor

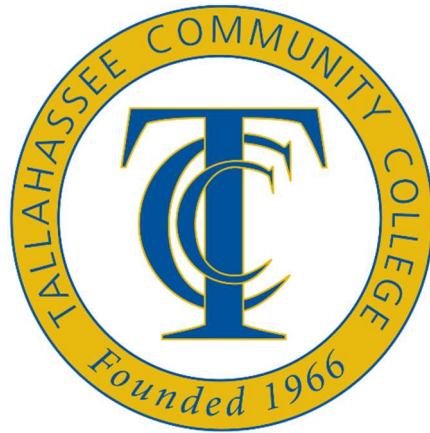
Tallahassee Community College (850) 201-8011

Drawn by: WBH
Date: 05/29/2014
Revised: 8-28-2017

Sheet number

1

Not to Scale



Transportation and Logistics Center (TLC)

850 Appleyard Drive

Tallahassee, FL 32304