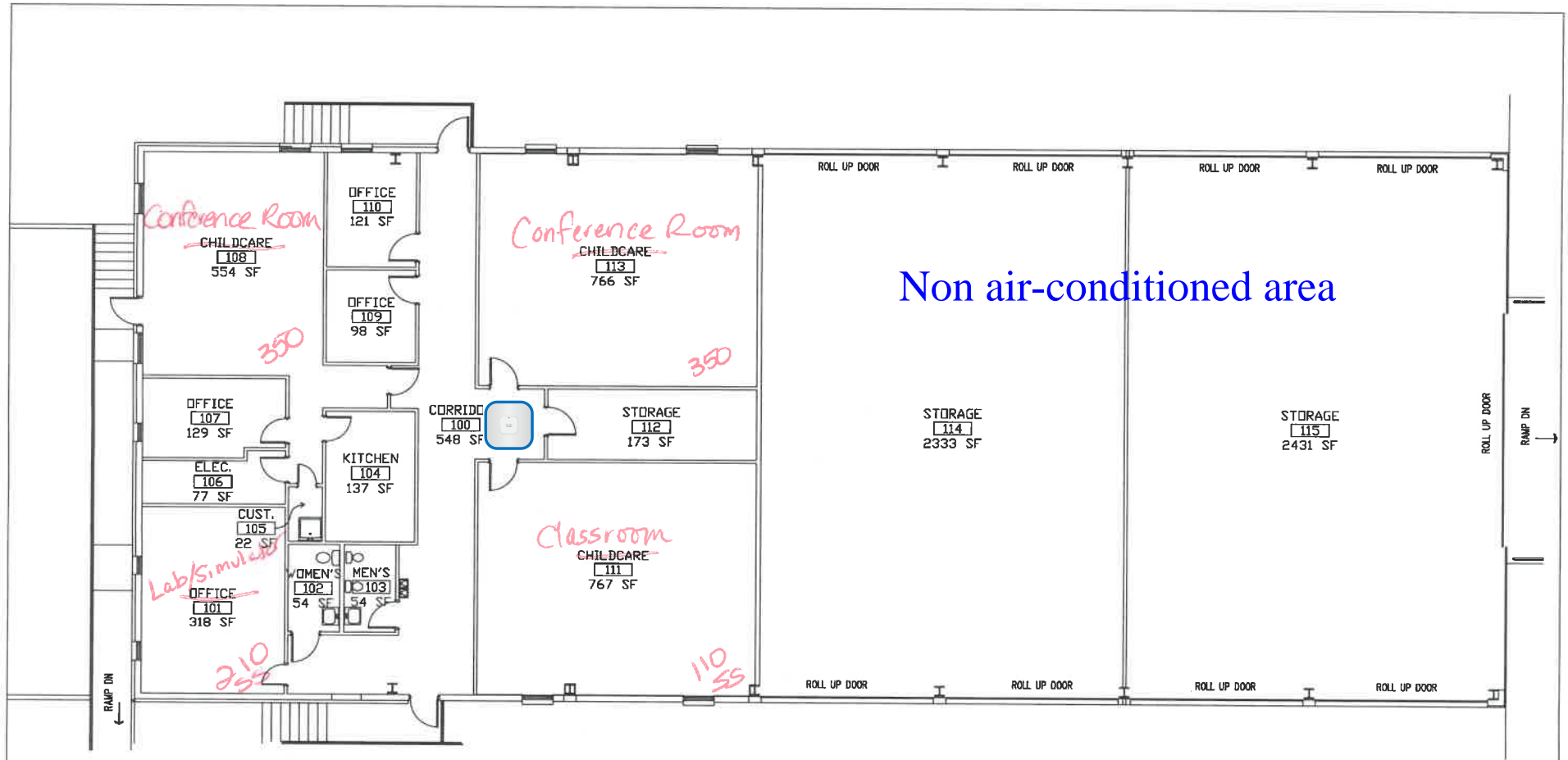


AP - Hallway between kitchen and storage area 112



aka Transportation and Logistics Center



FACILITY #31 (RY)
 RYDER BUILDING--EAGLES NEST
 1ST FLOOR PLAN

EXT. COVERED AREA FOR COLLEGE USE
 0 SF
 NET ROOMS
 8582 SF
 GROSS AREA
 9014 SF



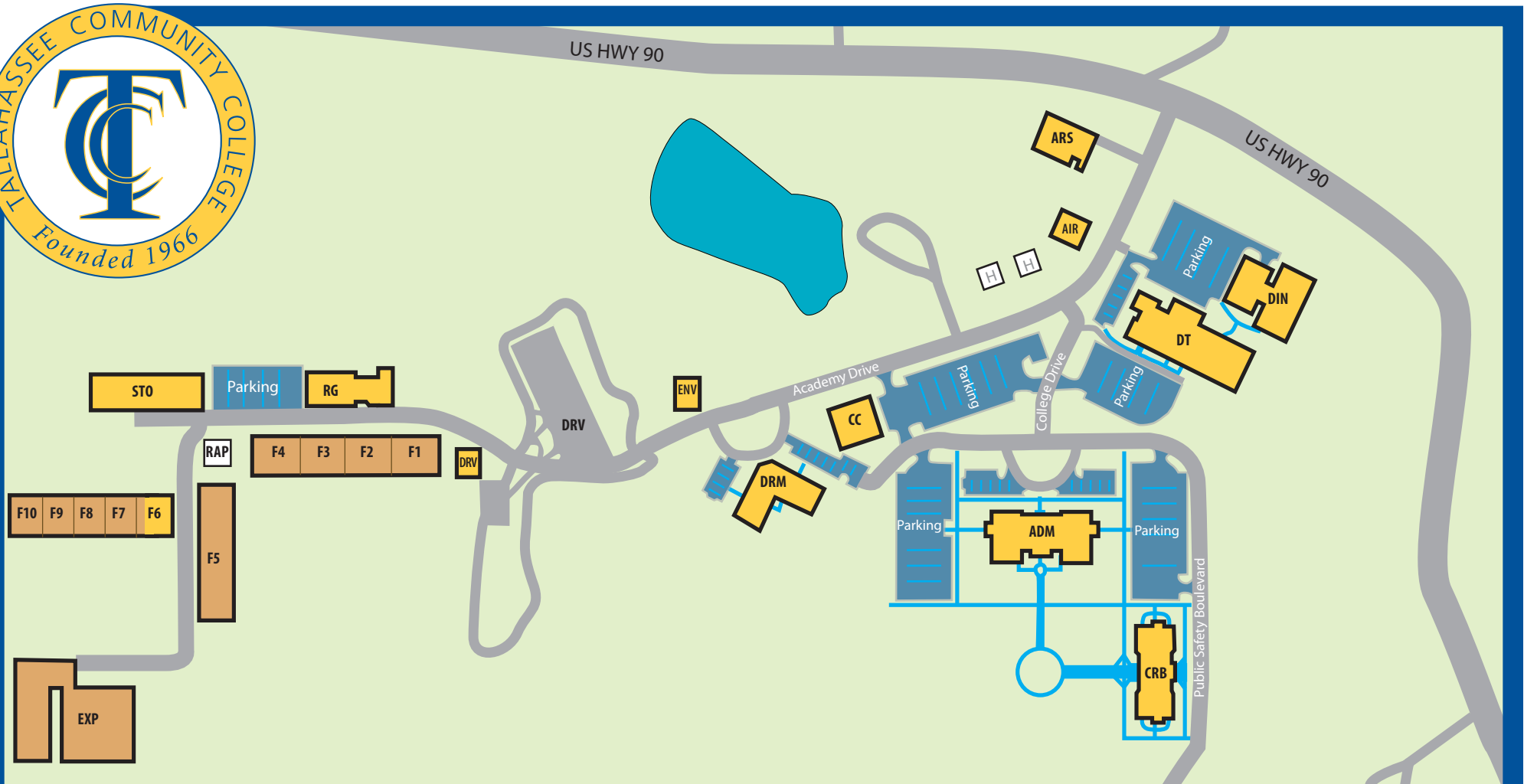
FACILITIES PLANNING AND
 CONSTRUCTION DIVISION
 REVISED BY: AMBER REAMS
 REVISION DATE: 12-05-13
 SCALE: 3/32" = 1'-0"



Florida Public Safety Institute (FPSI)

Academy Drive

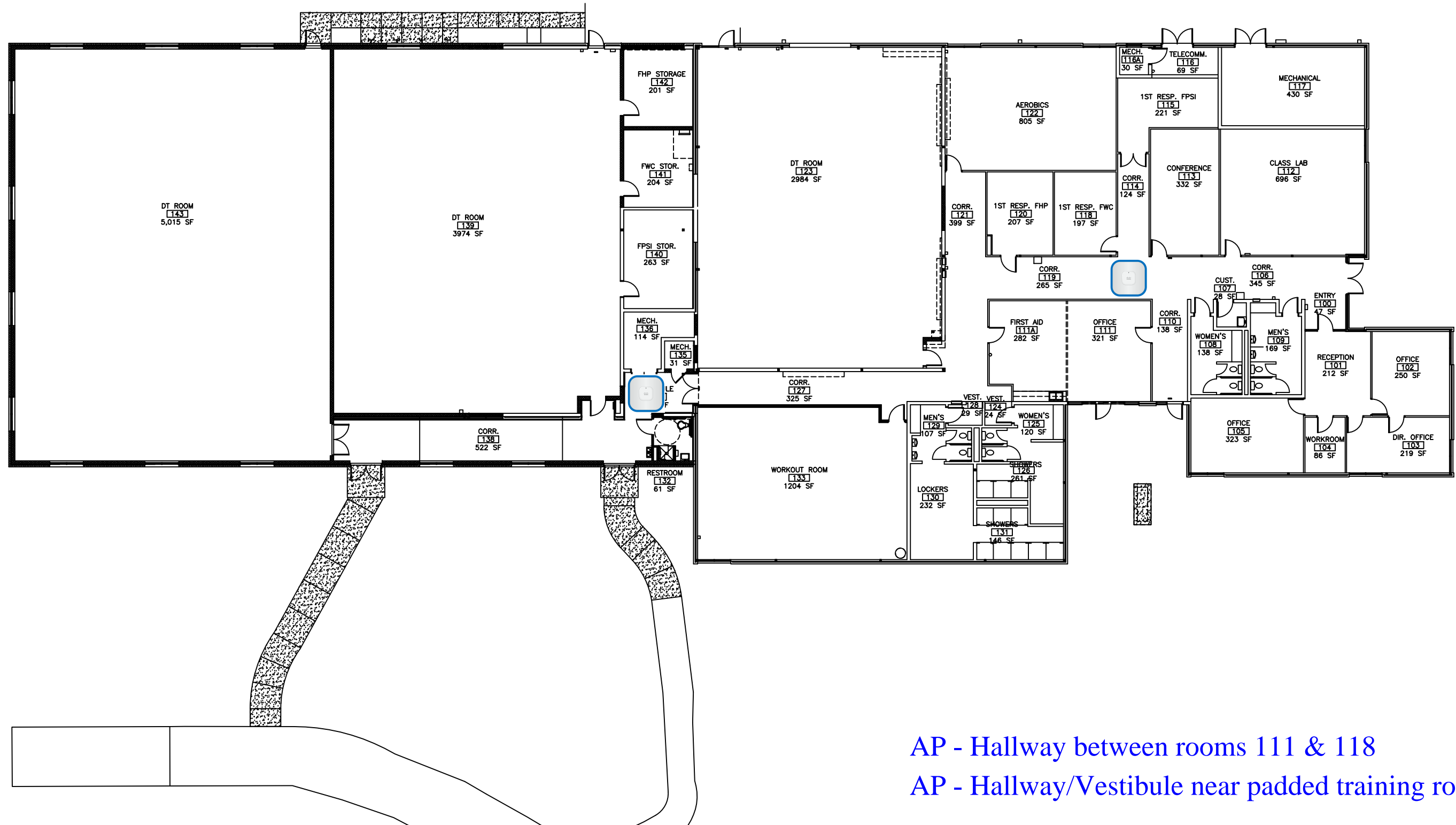
Havana, FL 32333



FLORIDA PUBLIC SAFETY INSTITUTE CAMPUS MAP

ADM	Administration Building	ST0	Range Storage Building	F8	Firearms Range 8; Reactionary Steel Range
CRB	Classroom Building	F1	Firearms Range 1; 50 Yard Paper Target Range	F9	Firearms Range 9; Reactionary Steel Range
DIN	Dining Facility	F2	Firearms Range 2; 25 Yard Paper Target Range	F10	Firearms Range 10; Steel Headplate Range
CC	Conference Center	F3	Firearms Range 3; 50 Yard Paper Target Range	EXP	Explosives Range
DT	Defensive Tactics Building	F4	Firearms Range 4; 50 Yard Paper Target Range	ENV	Environmental Crime Training Area
HOU	Academy Housing	RAP	Rappel Tower	ARS	State Arson Lab
DRM	Dorm Annex	F5	Firearms Range 5; 200 Yard Rifle Range	AIR	Air Methods Base
DRV	Driving Complex	F6	Firearms Range 6; Tactical Entry House	H	Helipads
RG	Firearms Range Building	F7	Firearms Range 7; Cover and Concealment Range		

Not Shown on Map: TCC Main Campus, TCC Capitol Center, Quincy House, Wakulla Center



AP - Hallway between rooms 111 & 118
 AP - Hallway/Vestibule near padded training rooms



**FACILITY #1 (DT)
 DEFENSIVE TACTICS BUILDING
 1ST FLOOR PLAN**

EXT. COVERED AREA FOR COLLEGE USE
 □ SF

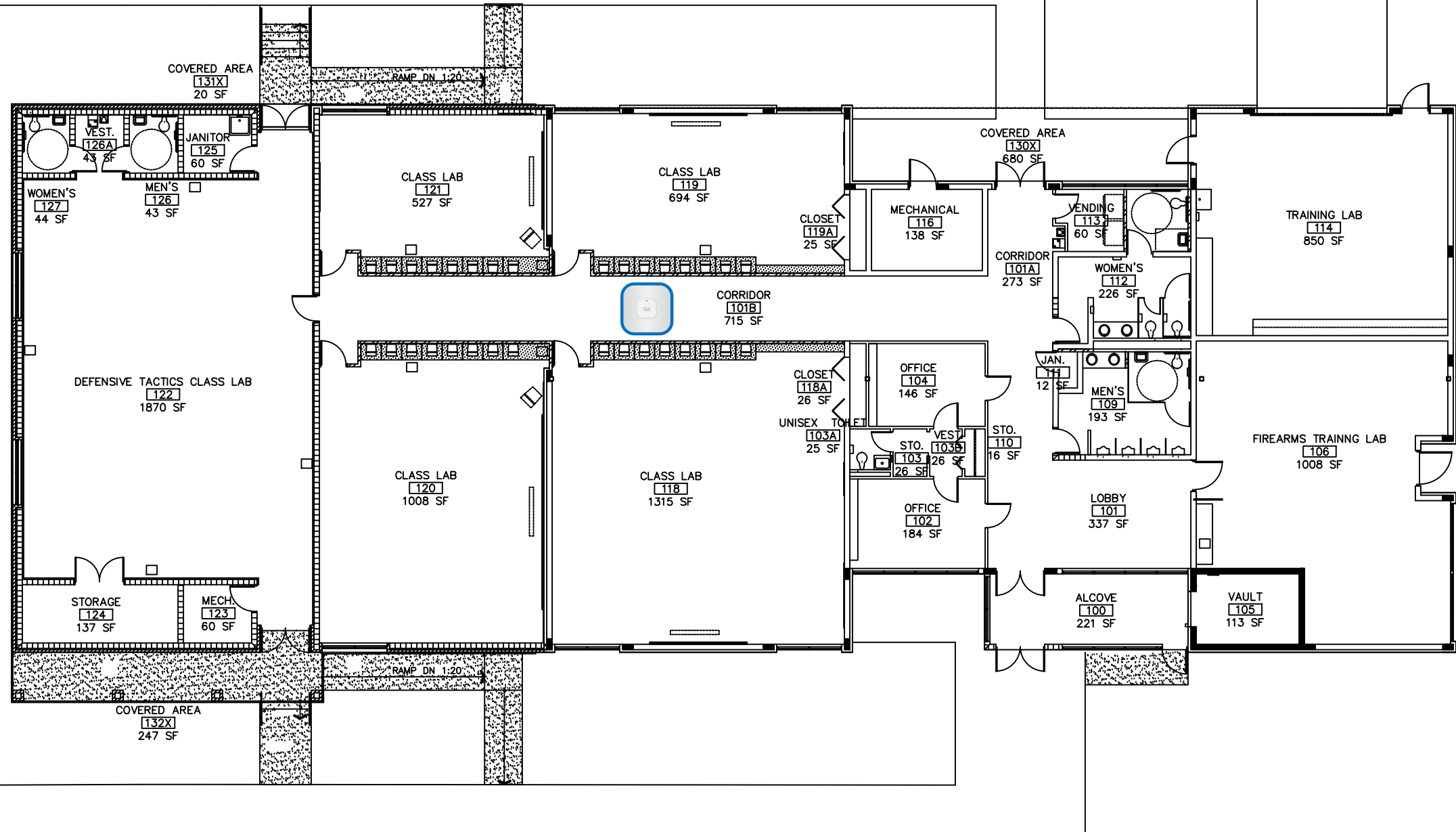


NET ROOMS
 22265 SF
 GROSS AREA
 23625 SF

FACILITIES PLANNING AND
 CONSTRUCTION DIVISION

 REVISED BY: AMBER REAMS
 REVISION DATE: 12-02-13
 SCALE: NTS

AP - Outside of classroom 118



FACILITY #2 (RB)
 RANGE BUILDING
 1ST FLOOR PLAN

EXT. COVERED AREA FOR COLLEGE USE

947 SF

NET ROOMS

11401 SF

GROSS AREA

11991 SF



FACILITIES PLANNING AND
 CONSTRUCTION DIVISION

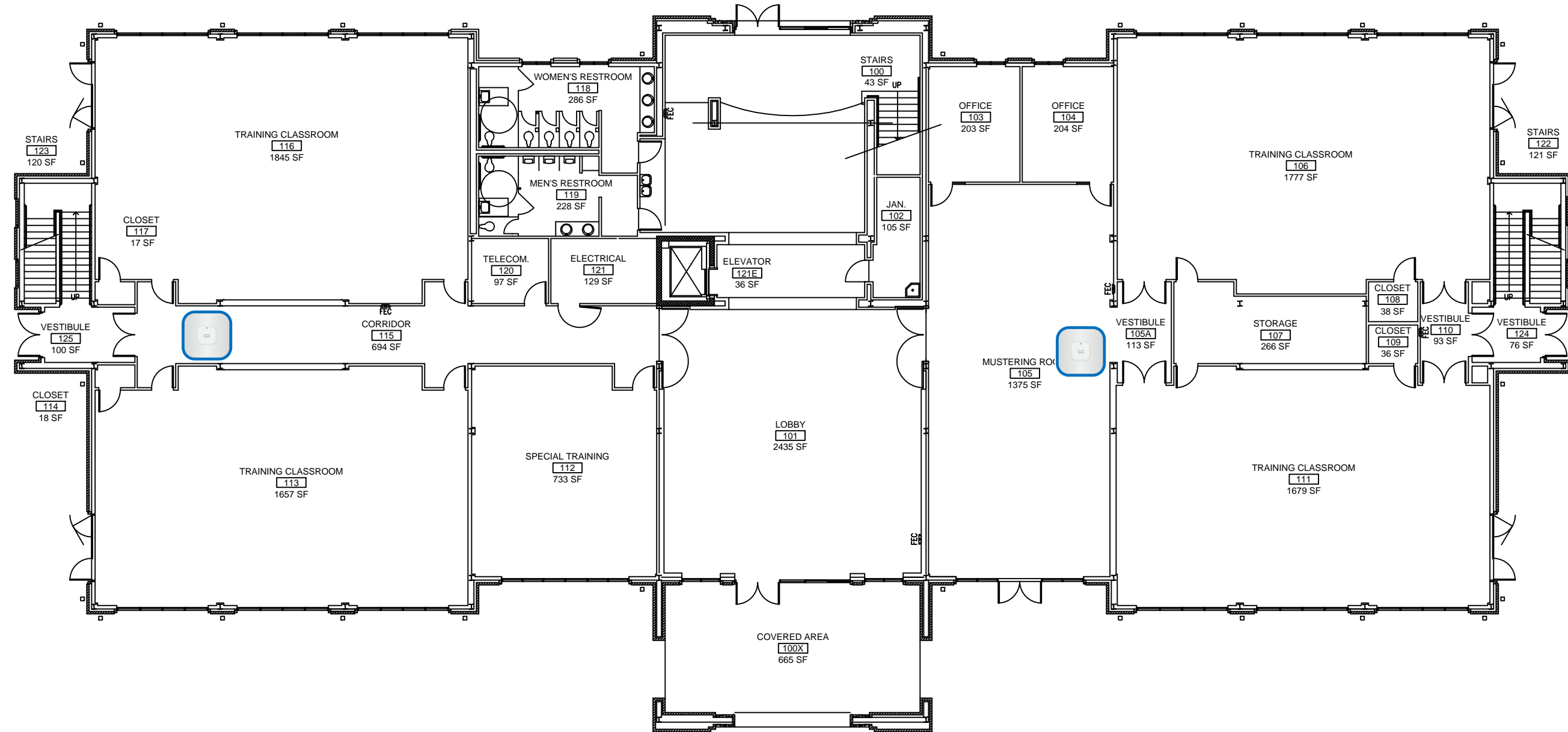
REVISED BY: AMBER REAMS

REVISION DATE: 12-02-13

SCALE: 1/16" = 1'-0"

AP - North end of main hallway

AP - South end of room 105 (Mustering Room)



**FACILITY #3 (CBA)
CLASSROOM BUILDING A
1ST FLOOR PLAN**

EXT. COVERED AREA FOR COLLEGE USE

0 SF
NET ROOMS
15189 SF
GROSS AREA
16435 SF

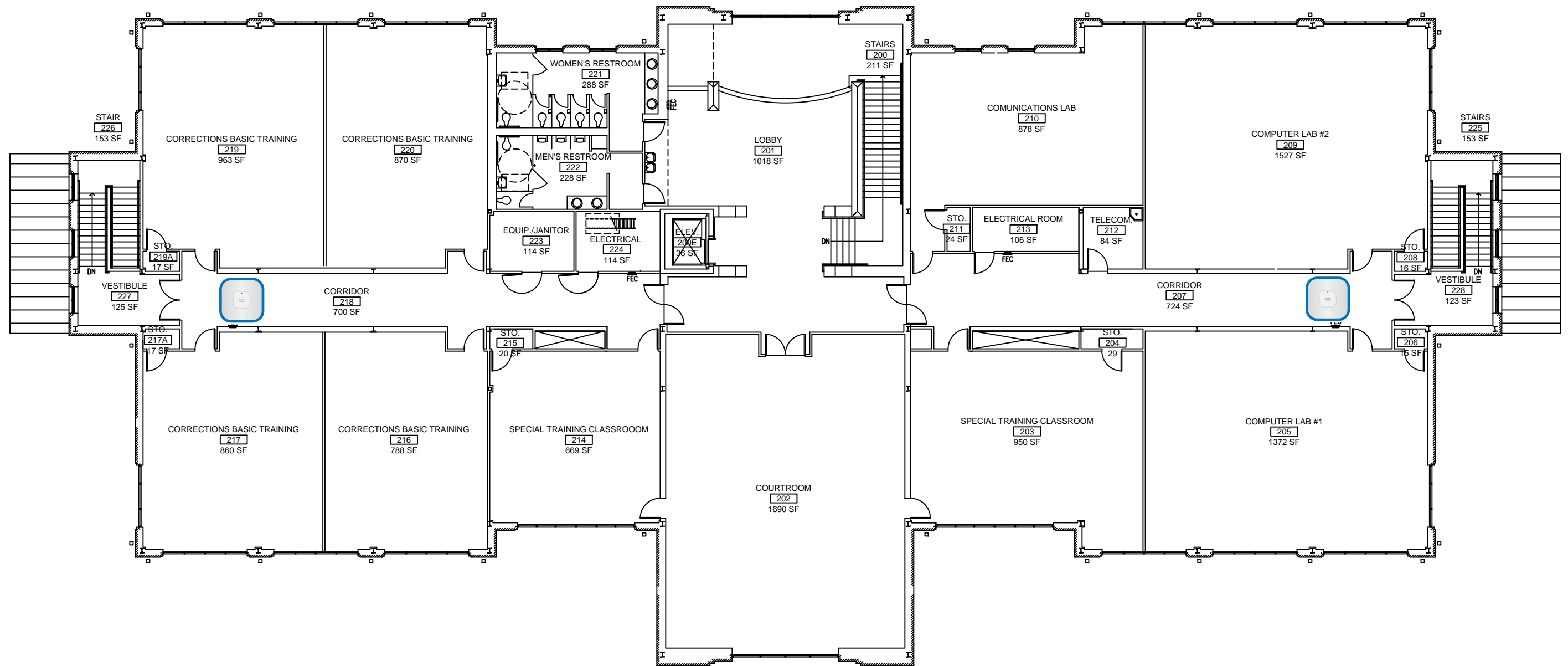


FACILITIES PLANNING AND
CONSTRUCTION DIVISION

REVISED BY: AMBER REAMS
REVISION DATE: 12-02-13
SCALE: 1/16" = 1'-0"

AP - North end of main corridor

AP - South end of main corridor



**FACILITY #3 (CBA)
CLASSROOM BUILDING A
2ND FLOOR PLAN**

EXT. COVERED AREA FOR COLLEGE USE

3090 SF

NET ROOMS

17108 SF

GROSS AREA

18762 SF



N

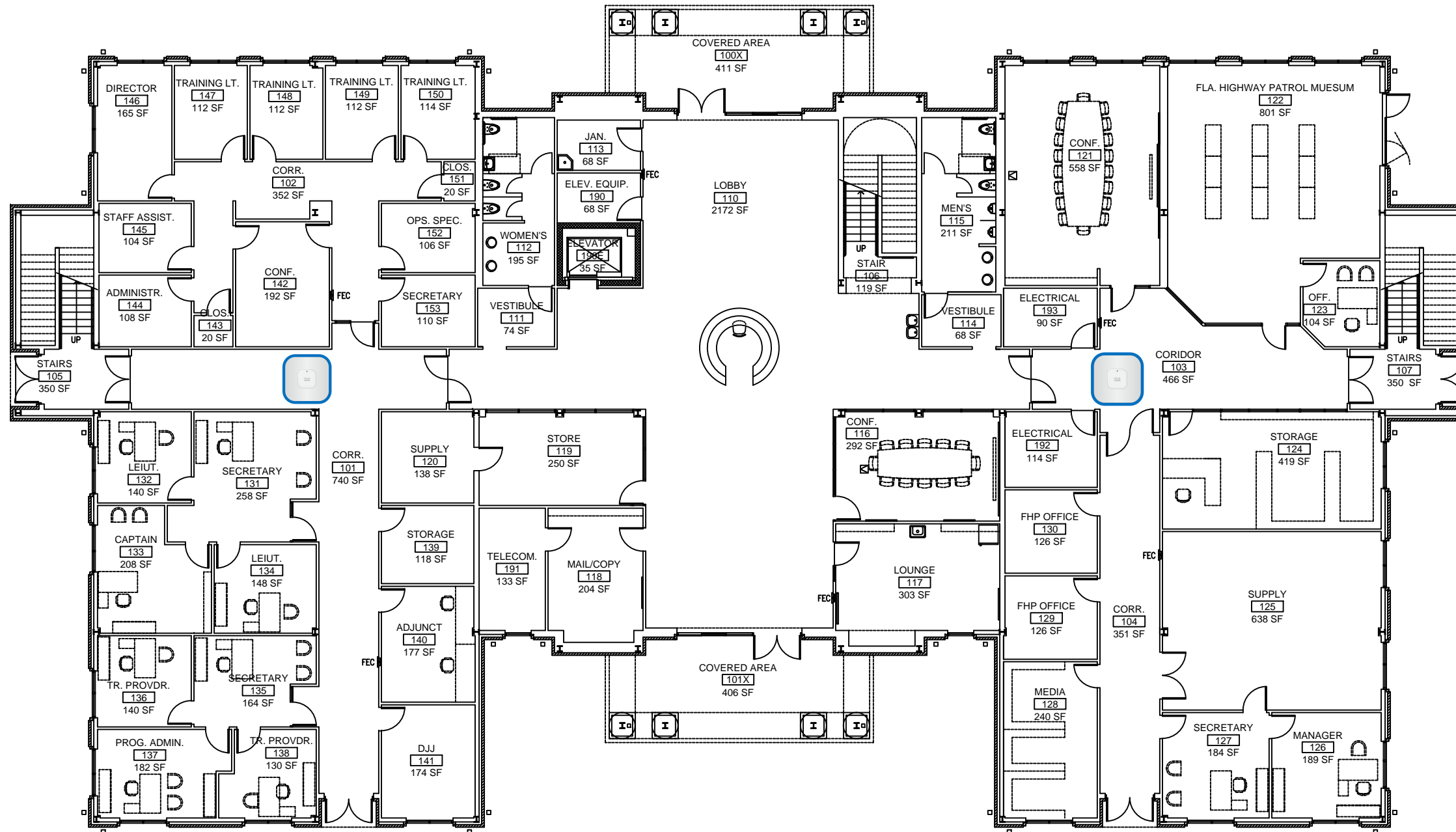
FACILITIES PLANNING AND
CONSTRUCTION DIVISION

REVISED BY: AMBER REAMS

REVISION DATE: 12-02-13

SCALE: 1/16" = 1'-0"

AP - Outside FWC Office 102
 AP - West end of main corridor



**FACILITY #4 (AB)
 ADMINISTRATION BUILDING
 1ST FLOOR PLAN**

EXT. COVERED AREA FOR COLLEGE USE

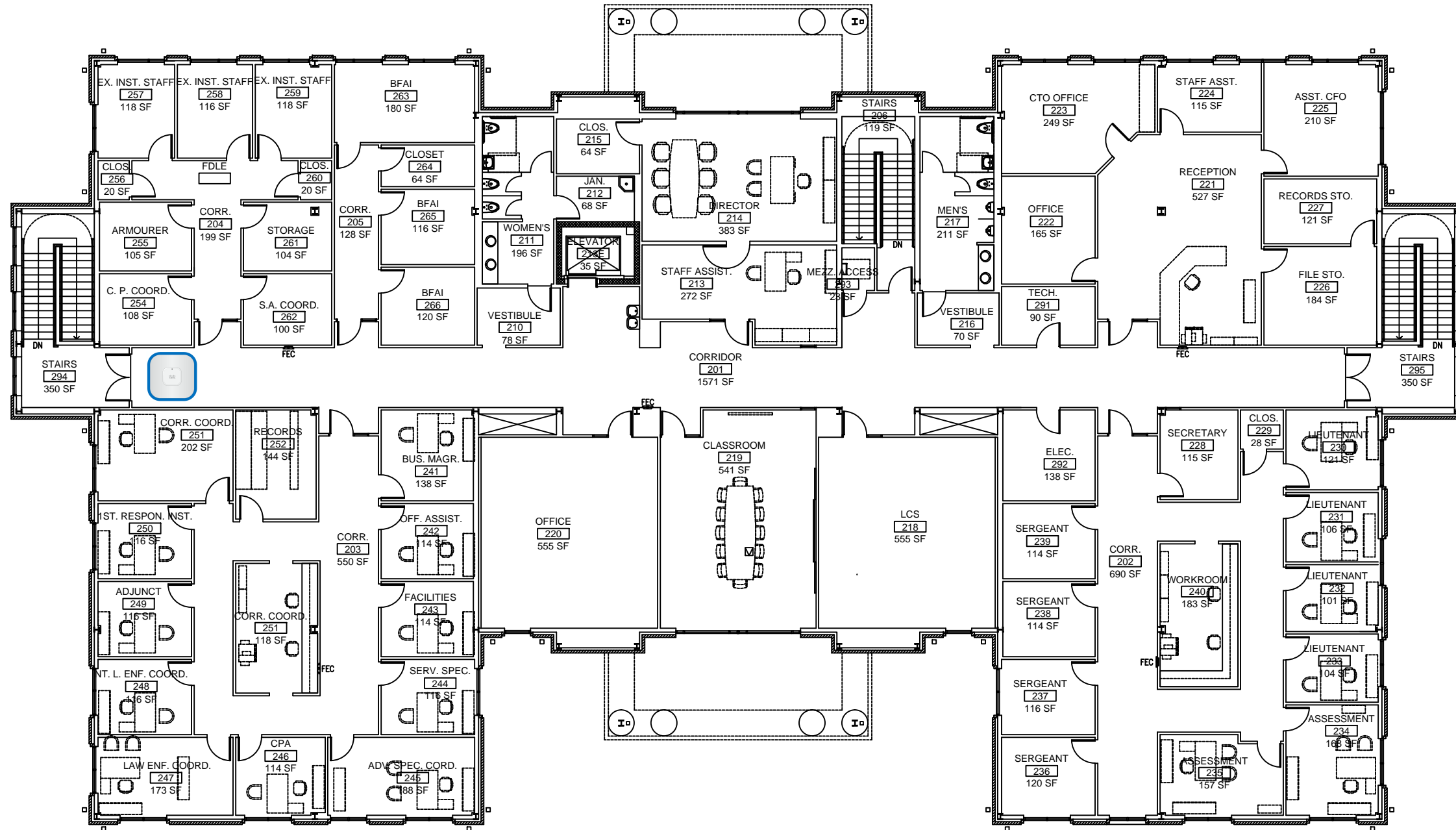


817 SF
 NET ROOMS
 14459 SF
 GROSS AREA
 14693 SF

FACILITIES PLANNING AND
 CONSTRUCTION DIVISION

REVISED BY: AMBER REAMS
 REVISION DATE: 12-04-13
 SCALE: 1/16" = 1'-0"

AP - West end of main hallway



FACILITY #4 (AB)
ADMINISTRATION BUILDING
2ND FLOOR PLAN

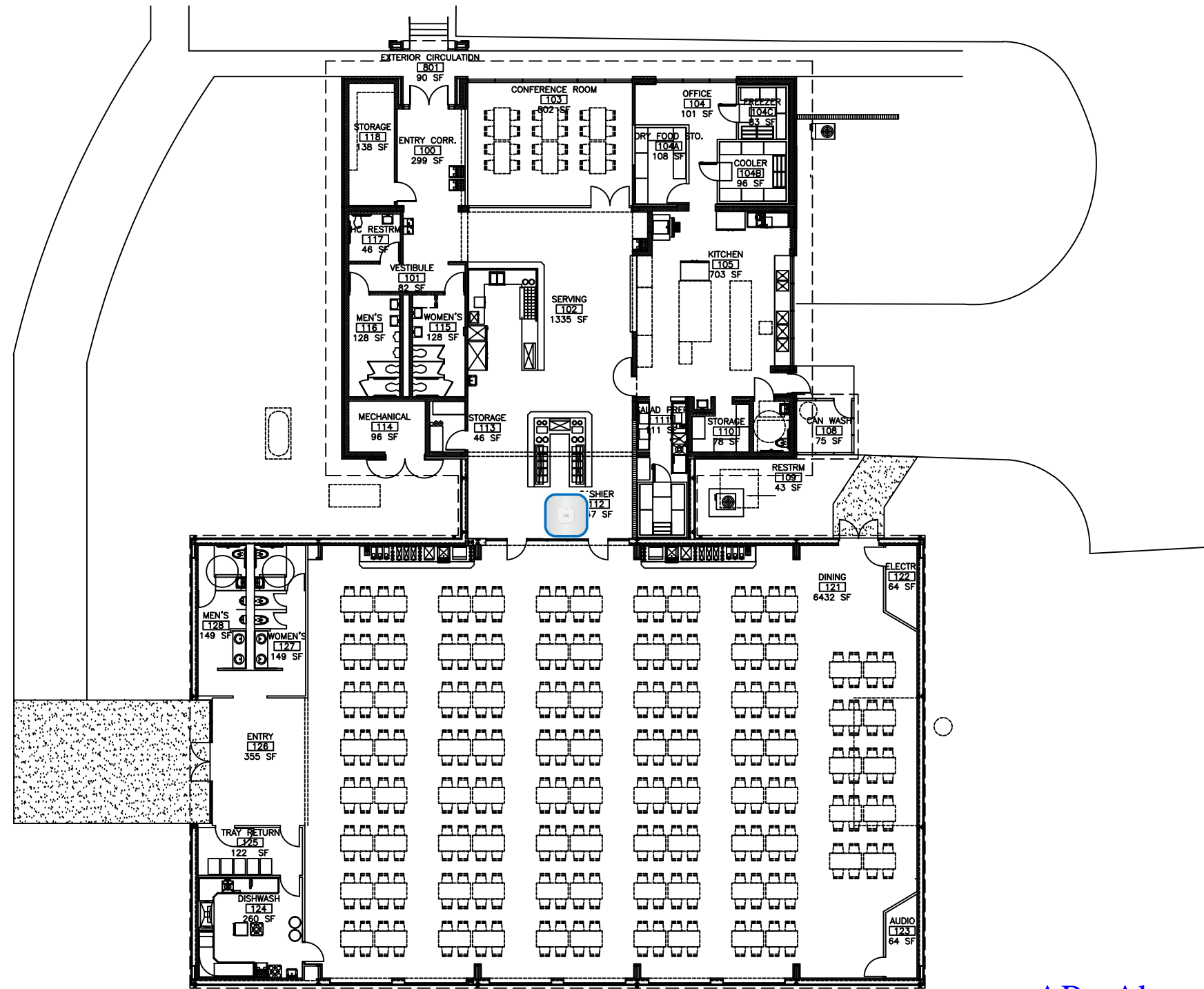
EXT. COVERED AREA FOR COLLEGE USE



0 SF
NET ROOMS
 13420 SF
GROSS AREA
 14693 SF

FACILITIES PLANNING AND
 CONSTRUCTION DIVISION

REVISED BY: AMBER REAMS
 REVISION DATE: 12-02-13
 SCALE: 1/16" = 1'-0"



AP - Above cash registers in room 112



**FACILITY #8 (DH)
DINING HALL
1ST FLOOR PLAN**

EXT. COVERED AREA FOR COLLEGE USE

0 SF

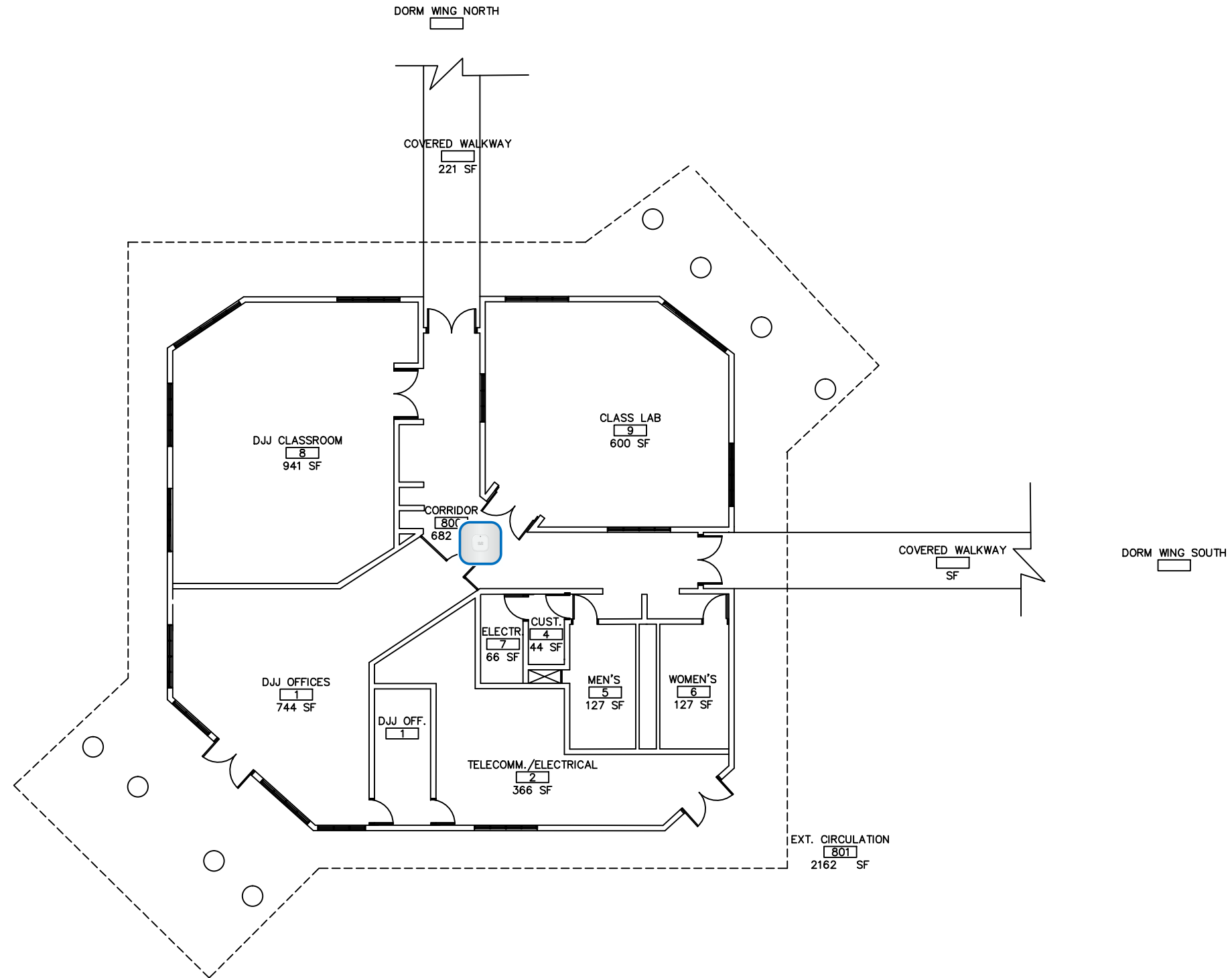
NET ROOMS
12130 SF
GROSS AREA
12787 SF



FACILITIES PLANNING AND
CONSTRUCTION DIVISION

REVISED BY: AMBER REAMS
REVISION DATE: 12-02-13
SCALE: NTS

AP - Outside of internal DJJ office entrance to room 09-001



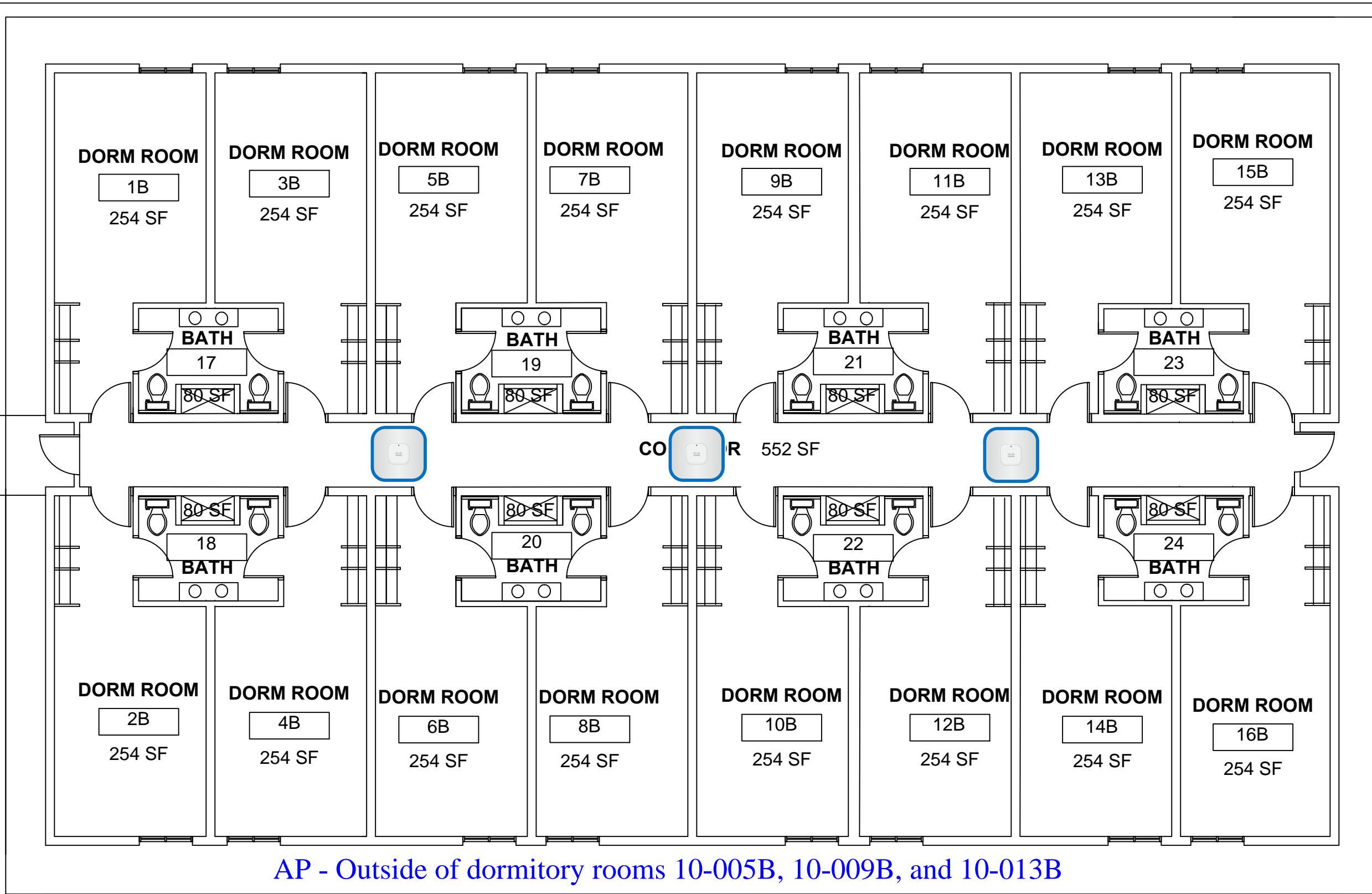
FACILITY #9 (DM)
DORM ANNEX BUILDING
1ST FLOOR PLAN



EXT. COVERED AREA FOR COLLEGE USE
2162 SF
NET ROOMS
5859 SF
GROSS AREA
6105 SF

FACILITIES PLANNING AND
CONSTRUCTION DIVISION

REVISED BY: AMBER REAMS
REVISION DATE: 12-02-13
SCALE: 1/16" = 1'-0"

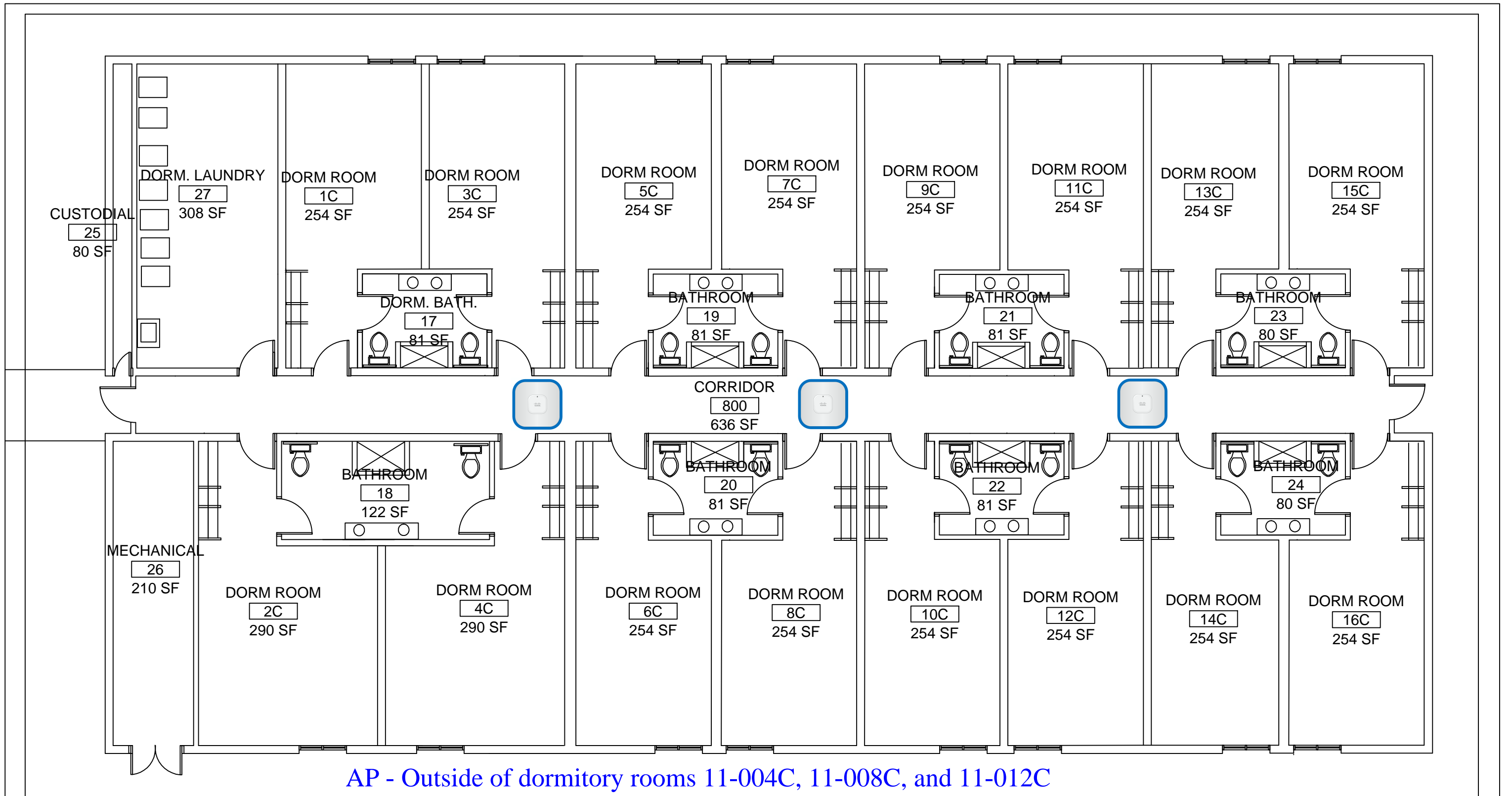


**FACILITY # 10 (DWS)
DORM WING SOUTH
1ST FLOOR PLAN**

<u>EXT. COVERED AREA FOR COLLEGE USE</u>
0 SF
<u>NET ROOMS</u>
5256 SF
<u>GROSS AREA</u>
5820 SF

FACILITIES PLANNING AND
CONSTRUCTION DIVISION

REVISED BY: AMBER REAMS
REVISION DATE: 12-02-13
SCALE: 1/8" = 1'-0"

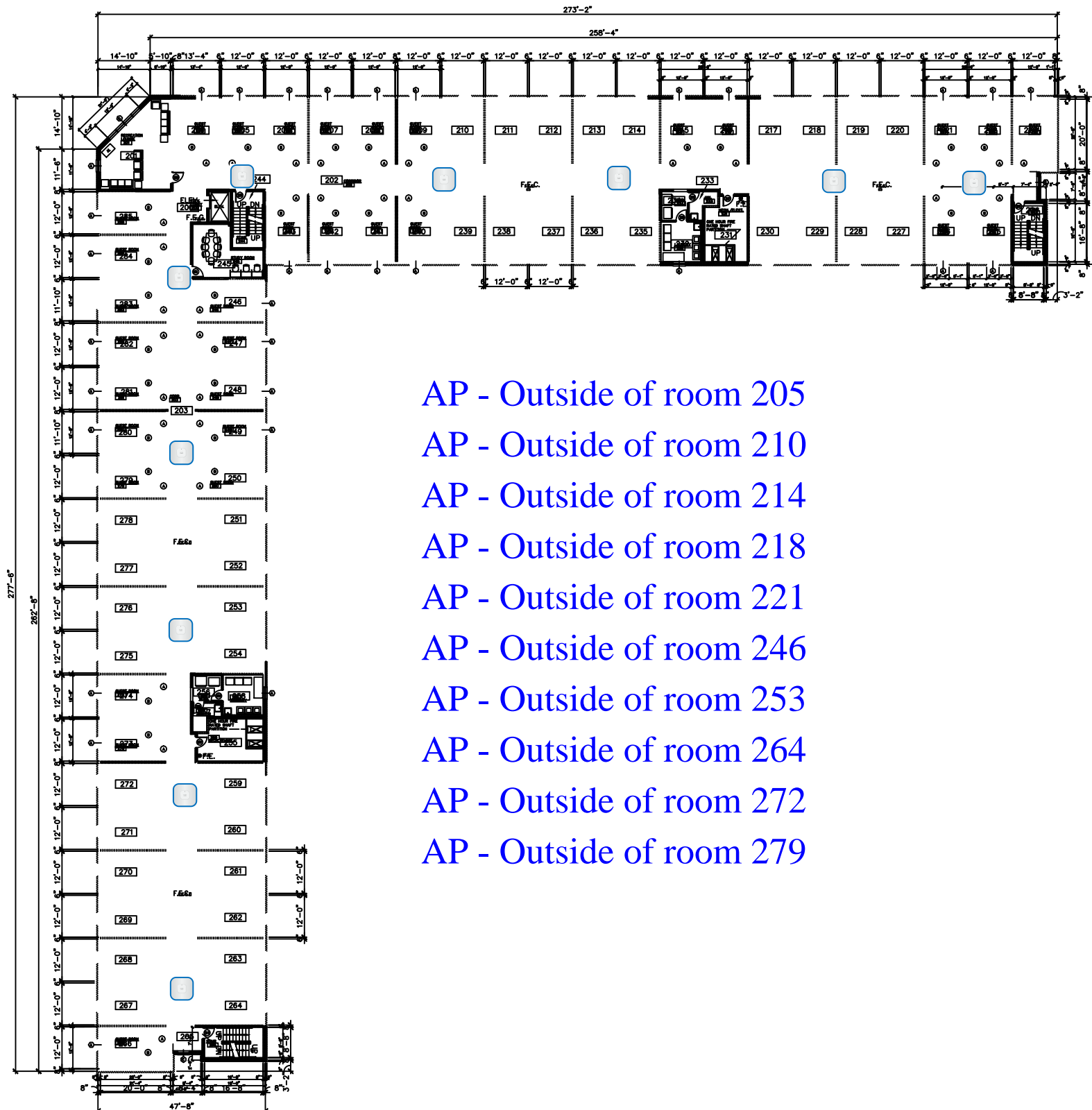


**FACILITY # 11 (DWN)
DORM WING NORTH
1ST FLOOR PLAN**

EXT. COVERED AREA FOR COLLEGE USE
0 SF
NET ROOMS
5985 SF
GROSS AREA
6105 SF

FACILITIES PLANNING AND
CONSTRUCTION DIVISION

REVISED BY: AMBER REAMS
REVISION DATE: 12-02-13
SCALE: 1/8" = 1'-0"



- AP - Outside of room 205
- AP - Outside of room 210
- AP - Outside of room 214
- AP - Outside of room 218
- AP - Outside of room 221
- AP - Outside of room 246
- AP - Outside of room 253
- AP - Outside of room 264
- AP - Outside of room 272
- AP - Outside of room 279



**FACILITY #15 (HOU)
HOUSING
2ND FLOOR PLAN**

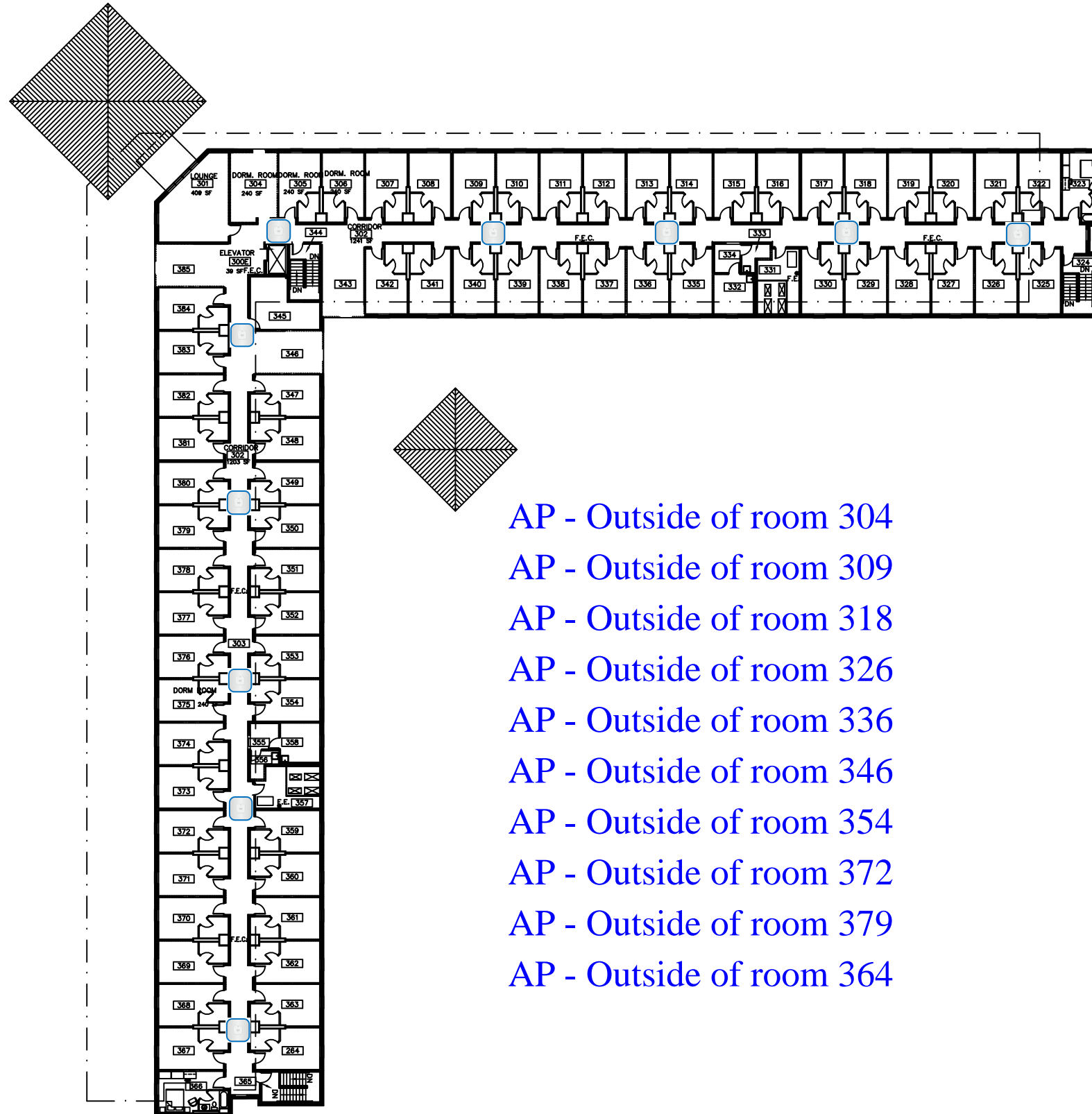
EXT. COVERED AREA FOR COLLEGE USE

1354 SF
NET ROOMS
22030 SF
GROSS AREA
25025 SF



FACILITIES PLANNING AND
CONSTRUCTION DIVISION

REVISED BY: AMBER REAMS
REVISION DATE: 12-02-13
SCALE: NTS



- AP - Outside of room 304
- AP - Outside of room 309
- AP - Outside of room 318
- AP - Outside of room 326
- AP - Outside of room 336
- AP - Outside of room 346
- AP - Outside of room 354
- AP - Outside of room 372
- AP - Outside of room 379
- AP - Outside of room 364



**FACILITY #15 (HOU)
HOUSING
3RD FLOOR PLAN**

EXT. COVERED AREA FOR COLLEGE USE

0 SF

NET ROOMS
21535 SF
GROSS AREA
25622 SF

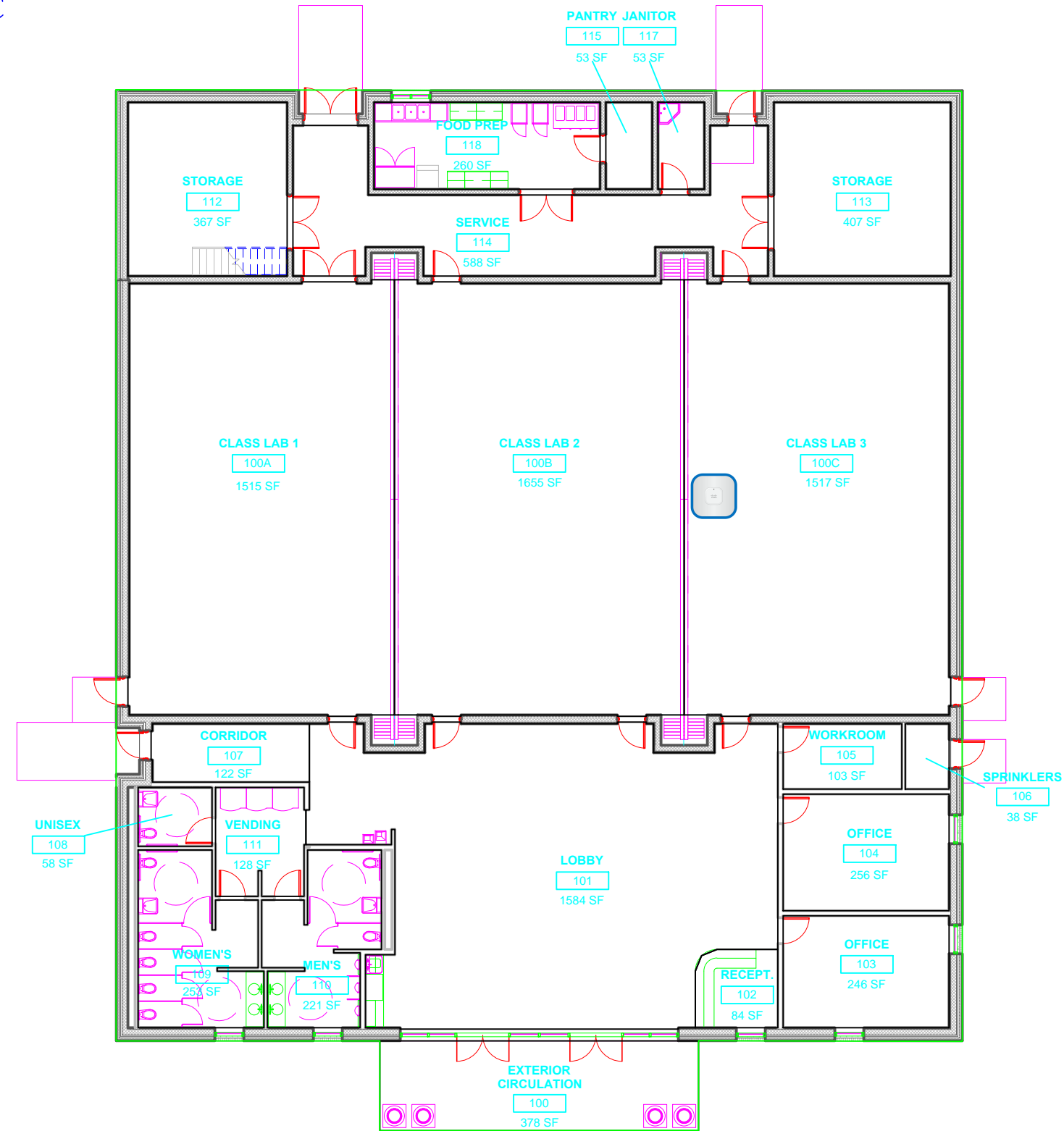


N

FACILITIES PLANNING AND
CONSTRUCTION DIVISION

REVISED BY: AMBER REAMS
REVISION DATE: 12-02-13
SCALE: NTS

AP - Back of partition section 100C



**FACILITY #16 (CCB)
CONFERENCE CENTER BUILDING
1ST FLOOR PLAN**

EXT. COVERED AREA FOR COLLEGE USE



0 SF
NET ROOMS
9886 SF
GROSS AREA
11025 SF

**FACILITIES PLANNING AND
CONSTRUCTION DIVISION**

REVISED BY: AMBER REAMS
REVISION DATE: 12-02-13
SCALE: 1/16" = 1'-0"

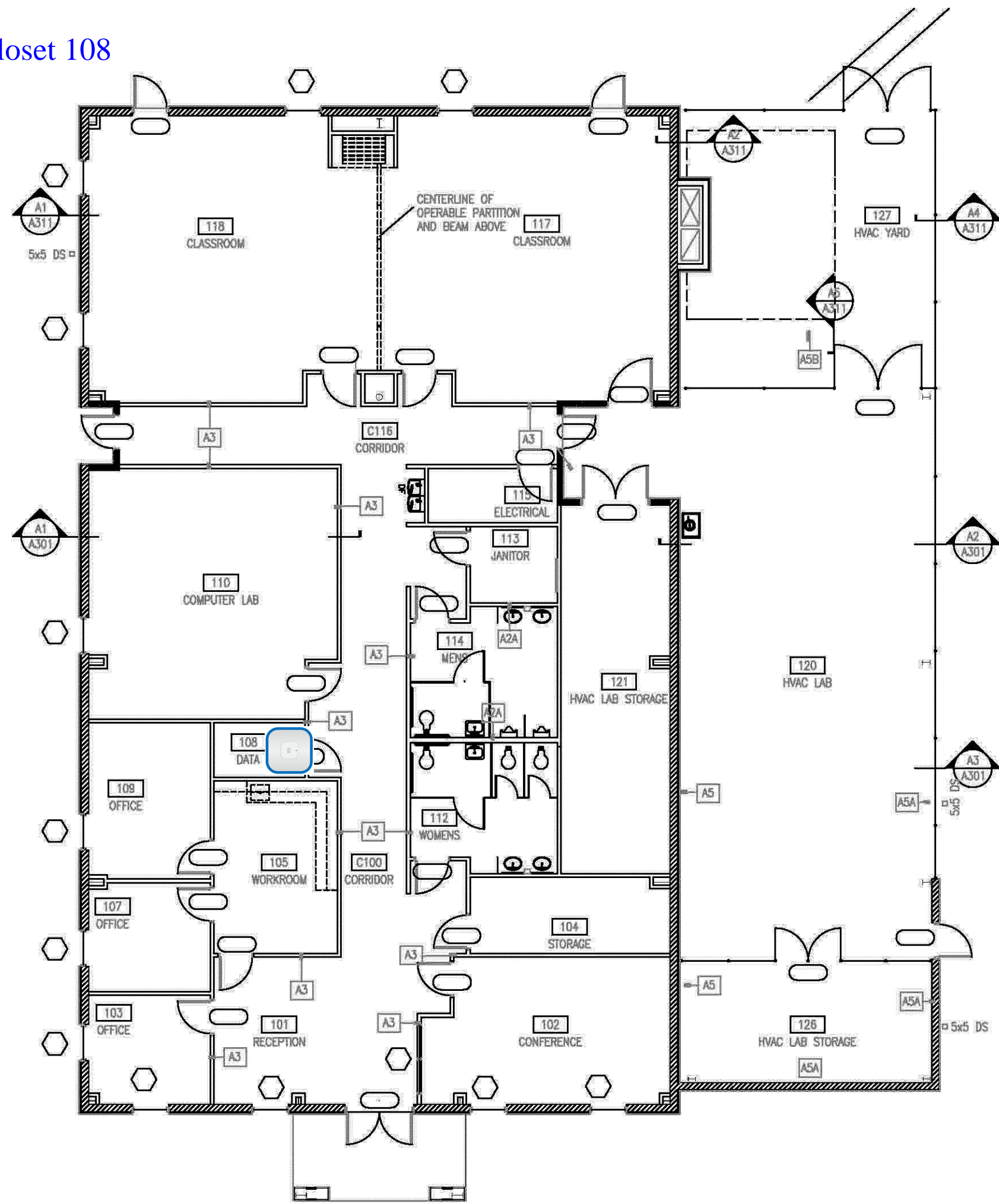


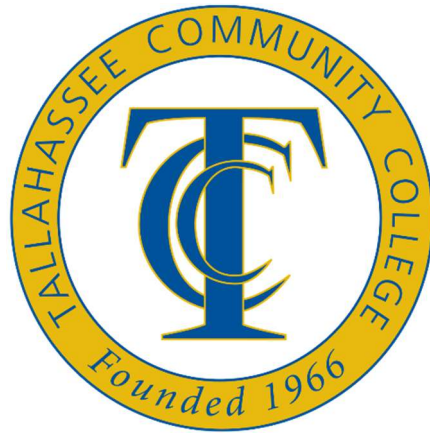
Gadsden Center

223 Pat Thomas Parkway

Quincy, FL 32351

AP - Inside Communications Closet 108





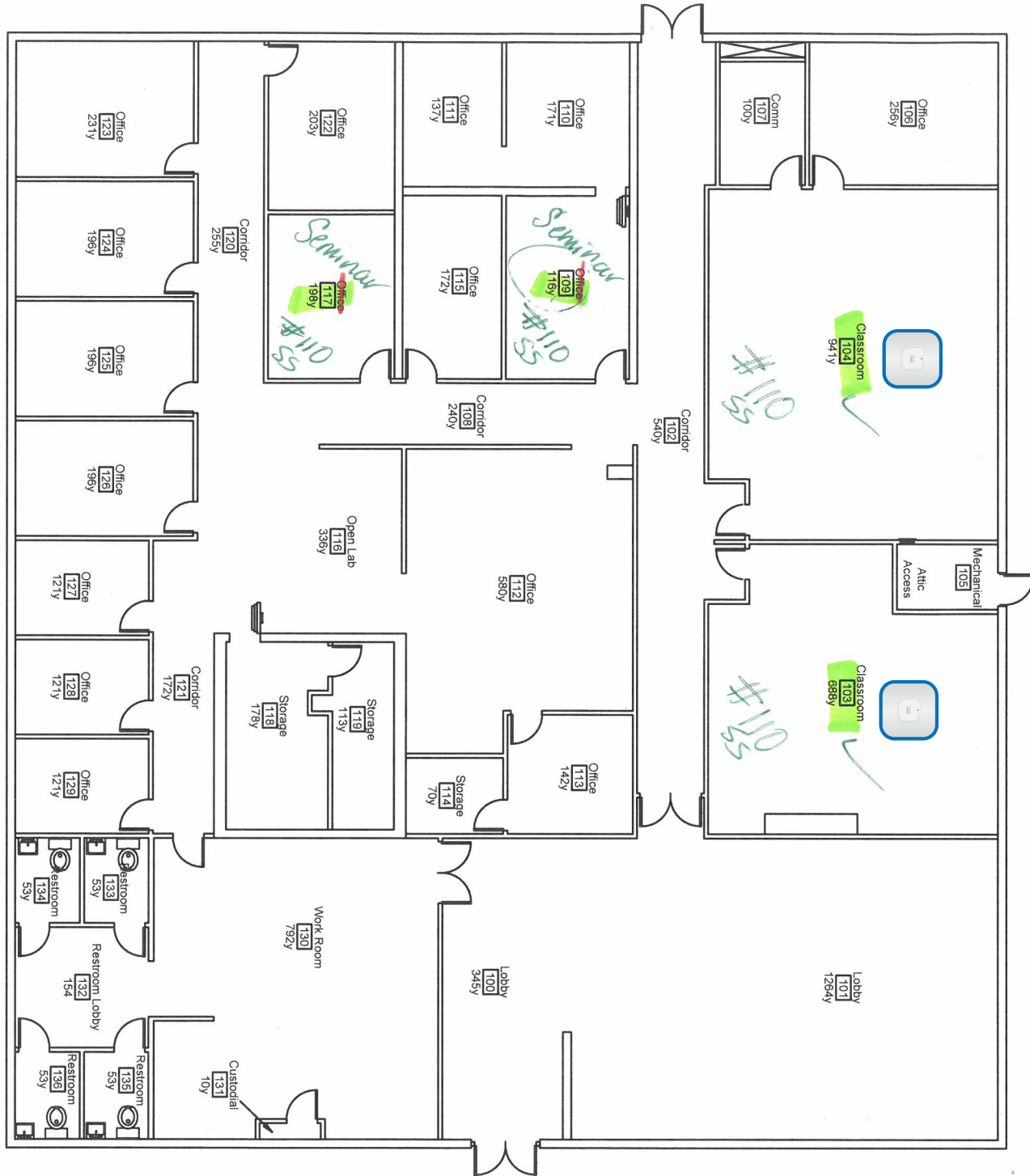
Wakulla Center

2932 Crawfordville Highway

Crawfordville, FL 32327

AP - Inside room 103

AP - Inside room 104



Wakulla Center @ Centennial Bank

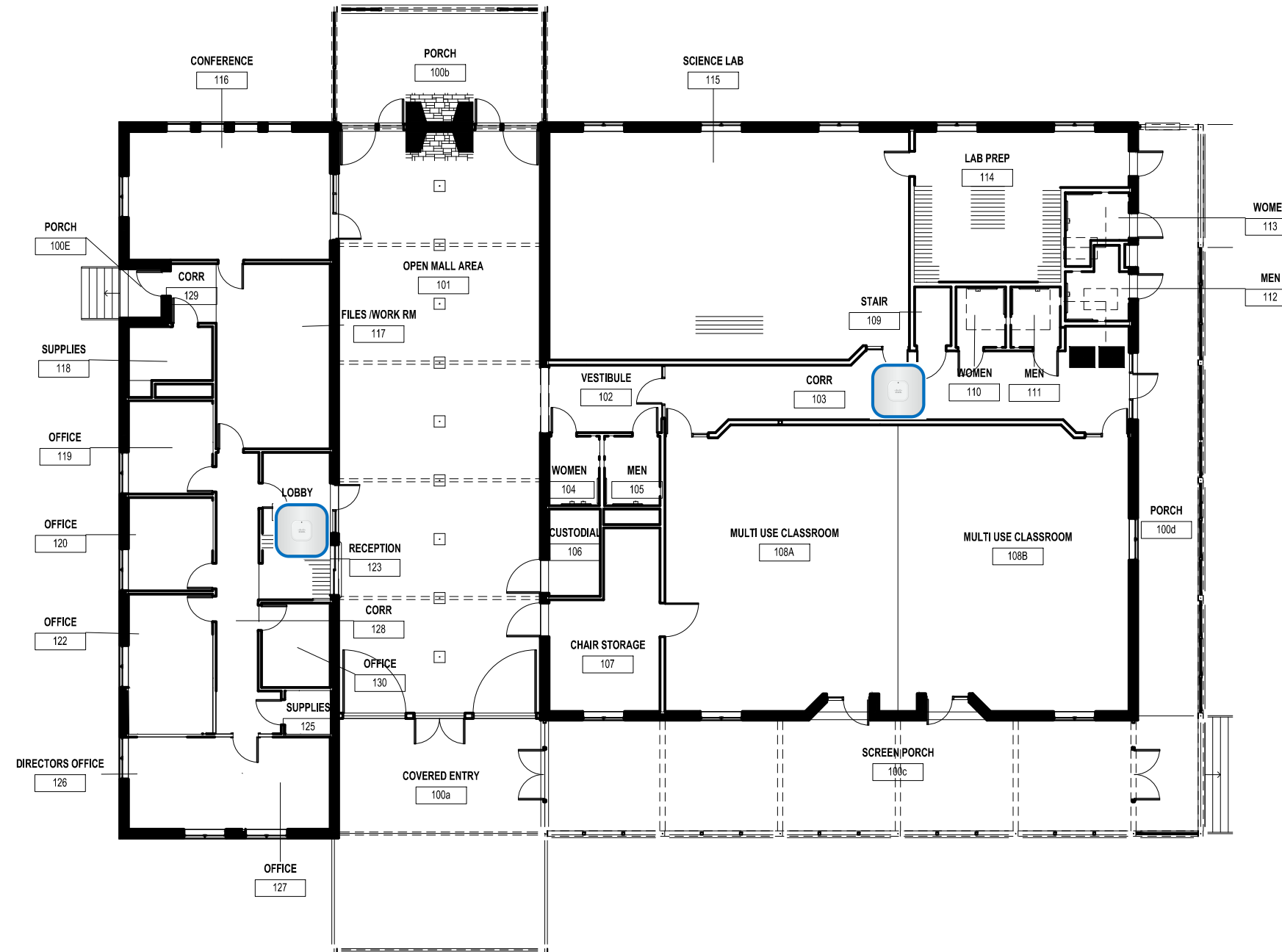
RM + RV
1/8/18
COMPLETED



Wakulla Environmental Institute (WEI)

170 Preservation Way
Crawfordville, FL 32327

AP - Inside Lobby
 AP - East Hallway



WAKULLA ENVIRONMENTAL INSTITUTE

EXT. COVERED AREA FOR COLLEGE USE



SF
NET ROOMS
 SF
GROSS AREA
 SF

FACILITIES PLANNING AND CONSTRUCTION DIVISION

REVISED BY: JAMES MCGUIRE
 REVISION DATE: 12-12-2016
 SCALE: NTS