



October 19, 2009

## MEMORANDUM

**TO:** District Board of Trustees  
**FROM:** William D. Law, Jr., President  
**SUBJECT:** TCC Foundation - Quarterly Financial Update

---

### Item Description:

Quarterly financial update from the TCC Foundation.

### Overview:

The TCC Foundation provides the same information to the DBOT as it provides to its own Board on a quarterly basis. Included in the report are:

1. Balance sheet
2. Investment performance summary
3. State Board of Administration - Local Government Investment Pool Summary

### Salient Facts:

Report included on the following three pages.

### Past Actions:

N/A

### Future Actions:

N/A

### Funding/Financial Matters:

N/A

### Staff Resource:

Robin C. Johnston

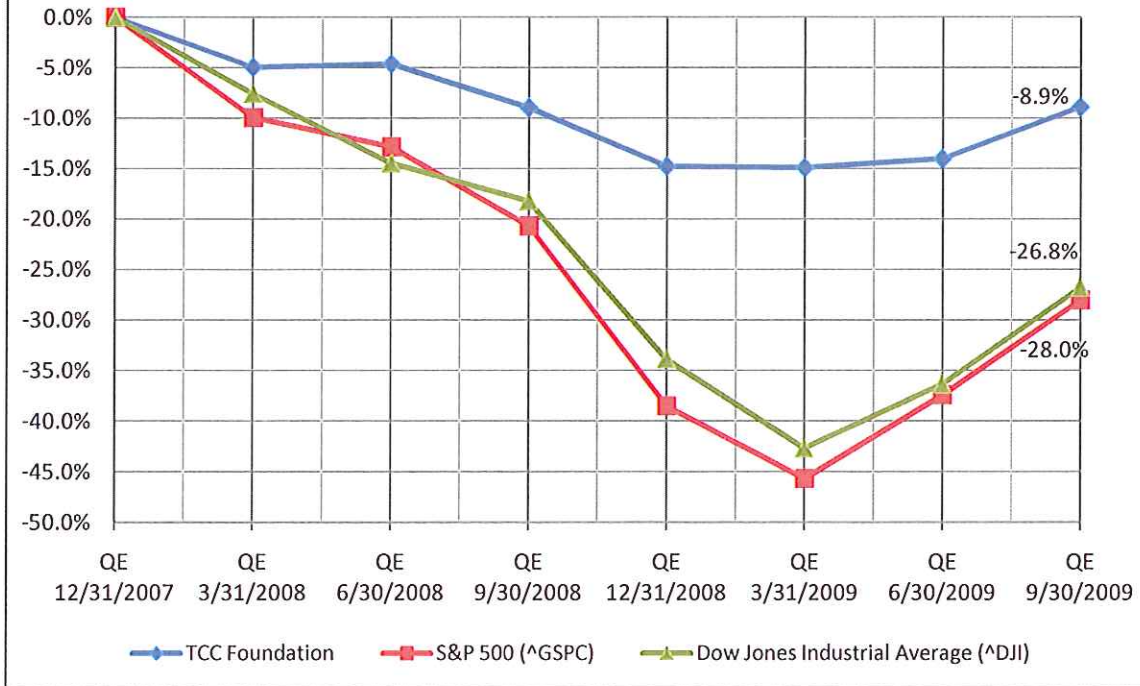
### Recommended Action:

None required. Report provided for information only.

Tallahassee Community College Foundation, Inc.  
Balance Sheet  
As of 9/30/2009

	PERMANENTLY RESTRICTED	TEMPORARILY RESTRICTED	UNRESTRICTED	Total
<b>ASSETS</b>				
CASH-IN-BANK	71,676.33	50,142.37	(71,517.18)	50,301.52
PETTY CASH	0.00	0.00	100.00	100.00
SHORT-TERM INVESTMENTS	0.00	4,575,150.46	220,793.50	4,795,943.96
ENDOWMENT POOL	6,653,824.31	248,614.14	1,523.00	6,903,961.45
RECEIVABLES (NET)	179.00	97,110.02	14,687.55	111,976.57
OTHER	1,360.00	0.00	0.00	1,360.00
Total CURRENT ASSETS	<u>6,727,039.64</u>	<u>4,971,016.99</u>	<u>165,586.87</u>	<u>11,863,643.50</u>
FIXED ASSETS (NET)	0.00	1,700,000.00	(21,704.10)	1,678,295.90
Total ASSETS	<u>6,727,039.64</u>	<u>6,671,016.99</u>	<u>143,882.77</u>	<u>13,541,939.40</u>
<b>LIABILITIES</b>				
	(1.02)	21,846.64	2,149.71	23,995.33
<b>FUND BALANCE</b>				
BEGINNING FUND BALANCE	5,630,864.00	6,933,828.67	200,667.01	12,765,359.68
YTD REVENUE	1,195,918.24	214,721.65	99,673.64	1,510,313.53
YTD EXPENDITURES	(136,015.58)	(478,355.97)	(143,357.59)	(757,729.14)
TRANSFERS	36,274.00	(21,024.00)	(15,250.00)	0.00
Total FUND BALANCE	<u>6,727,040.66</u>	<u>6,649,170.35</u>	<u>141,733.06</u>	<u>13,517,944.07</u>
TOTAL LIABILITY AND FUND BALANCE	<u>6,727,039.64</u>	<u>6,671,016.99</u>	<u>143,882.77</u>	<u>13,541,939.40</u>

## TCC Foundation 2008 - 2009 Investment Update



TCC Foundation			
Date	Investments Balance	Value Change	% Change
QE 12/31/2007	\$ 12,896,830	-	-
QE 3/31/2008	12,260,399	\$ (636,431)	-4.9%
QE 6/30/2008	12,302,298	41,899	-4.6%
QE 9/30/2008	11,745,254	(557,044)	-8.9%
QE 12/31/2008	10,994,287	(750,967)	-14.8%
QE 3/31/2009	10,977,307	(16,980)	-14.9%
QE 6/30/2009	11,089,517	112,210	-14.0%
QE 9/30/2009	11,750,307	660,790	-8.9%
		\$ (1,146,523)	

## TCC Foundation

Investment in SBA LGIP

### Plan B Transaction History

Date	Description	Transaction Amount	% Withdrawn	Remaining Balance	% of Original Balance Remaining
12/5/2007	Beginning Balance			\$ 674,259.50	100.0%
1/17/2008	Transfer to Plan A	(16,777.20)	-2.5%	657,482.30	97.5%
2/8/2008	Transfer to Plan A	(173,811.78)	-25.8%	483,670.52	71.7%
3/17/2008	Transfer to Plan A	(70,648.78)	-10.5%	413,021.74	61.3%
4/18/2008	Transfer to Plan A	(35,567.66)	-5.3%	377,454.08	56.0%
6/18/2008	Transfer to Plan A	(97,811.07)	-14.5%	279,643.01	41.5%
6/26/2008	Transfer to Plan A	(50,499.37)	-7.5%	229,143.64	34.0%
7/7/2008	Transfer to Plan A	(11,643.38)	-1.7%	217,500.26	32.3%
8/6/2008	Transfer to Plan A	(3,489.66)	-0.5%	214,010.60	31.7%
9/15/2008	Transfer to Plan A	(3,120.56)	-0.5%	210,890.04	31.3%
10/7/2008	Transfer to Plan A	(3,942.64)	-0.6%	206,947.40	30.7%
11/10/2008	Transfer to Plan A	(2,919.23)	-0.4%	204,028.17	30.3%
12/8/2008	Transfer to Plan A	(6,878.65)	-1.0%	197,149.52	29.2%
1/9/2009	Transfer to Plan A	(2,650.80)	-0.4%	194,498.72	28.8%
2/10/2009	Transfer to Plan A	(2,281.70)	-0.3%	192,217.02	28.5%
3/16/2009	Transfer to Plan A	(1,946.16)	-0.3%	190,270.86	28.2%
4/8/2009	Transfer to Plan A	(2,214.59)	-0.3%	188,056.27	27.9%
5/7/2009	Transfer to Plan A	(2,751.46)	-0.4%	185,304.81	27.5%
6/5/2009	Transfer to Plan A	(2,516.58)	-0.4%	182,788.23	27.1%
7/8/2009	Transfer to Plan A	(2,382.36)	-0.4%	180,405.87	26.8%
8/6/2009	Transfer to Plan A	(2,734.68)	-0.4%	\$ 177,671.19	26.4%
9/8/2009	Transfer to Plan A	(3,355.44)	-0.5%	\$ 174,315.75	25.9%
<b>Accumulated Withdrawals</b>		<b>\$ (499,943.75)</b>	<b>-74.1%</b>		
				3,355.44	

**8/31/2009**

Plan B NAV Balance	\$ 287,111,497.16
TCCF Proportion %	0.03355440%
<b>TCCF Plan B NAV Share</b>	<b>\$ 96,338.54</b>

**Unrealized Plan B Gain/(Loss) \$ (77,977.21)**

#### NOTES:

As liquidity becomes available, cash is transferred from Plan B to Plan A

TCCF Board directive is to divest all funds as they become available.

Plan A has a \$0 balance as of 8/31/09