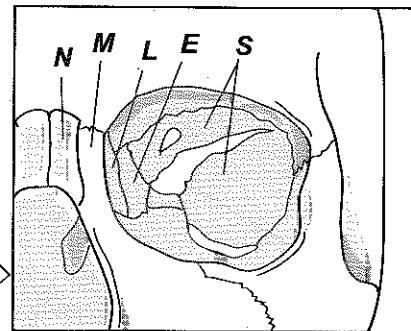


ORBITAL COMPLEX

Seven bones form the bony orbit that encases the eye



To recall five of these seven bones from the bridge of the nose to the back of the orbit, use the mnemonic:

Never Make Lily Eat Spinach!	=	Nasal bone Maxilla Lacrimal bone Ethmoid Sphenoid
--	---	---

Key to Illustration		
BONES (B)	SUTURES (S)	PROCESSES, PROJECTIONS (P)
B1 Frontal bone	S1 Coronal suture	P1 Middle nasal concha
B2 Sphenoid	S2 Squamous suture	P2 Perpendicular process of ethmoid
B3 Ethmoid	FORAMINA (F)	P3 Inferior nasal concha
B4 Lacrimal bone	F1 Supraorbital foramen	FISSURES (FS)
B5 Nasal bone	F2 Infraorbital foramen	FS1 Superior orbital fissure
B6 Parietal bone	F3 Mental foramen	FS2 Inferior orbital fissure
B7 Temporal bone	CANAL (C)	
B8 Palatine bone	C1 Optic canal	
B9 Zygomatic bone		
B10 Maxilla		
B11 Mandible		