

The worksheet below is adapted from

- A. Fundamentals of Anatomy and Physiology (9th Ed) by Martin et al
- B. Human Anatomy and Physiology Lab Manual (9th Ed) by Marieb and Mitchell

1. What are the 2 types of cardiac muscle cells involved in a normal heartbeat?

---



---

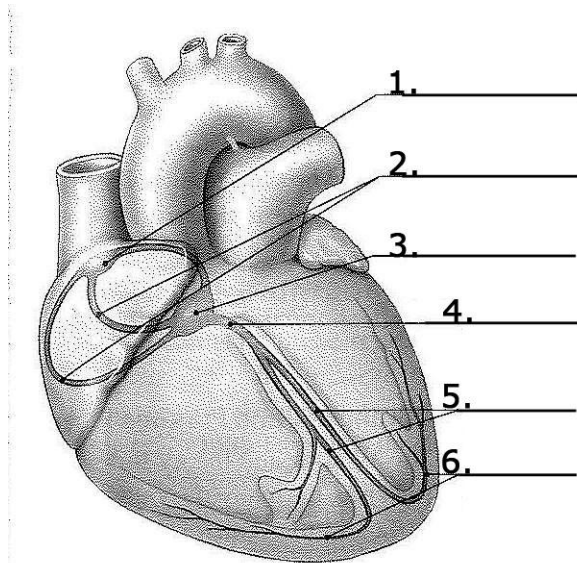
2. What does the term 'autorhythmicity'?

---



---

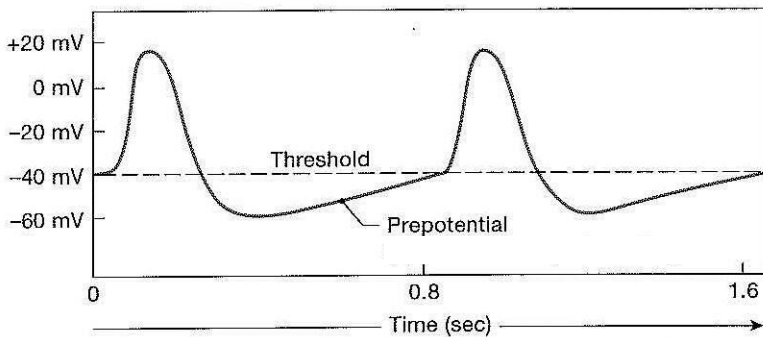
3. Match the terms on the left with the numbers in the figure for the components of the conducting system in the heart.



- |  |
|--|
| <ul style="list-style-type: none"> <li>a. Bundle branches</li> <li>b. Internodal pathways</li> <li>c. Atrioventricular (AV) bundle</li> <li>d. Sinoatrial (SA) node</li> <li>e. Purkinje fibers</li> <li>f. AV bundle (bundle of His)</li> </ul> |
|--|

**a** Components of the conducting system.

4. Referring to the graph below, describe the pacemaker potential.



---

---

---

5. Describe the pathway for impulse conduction through the heart; you may use the diagram below to indicate the pathway.

---

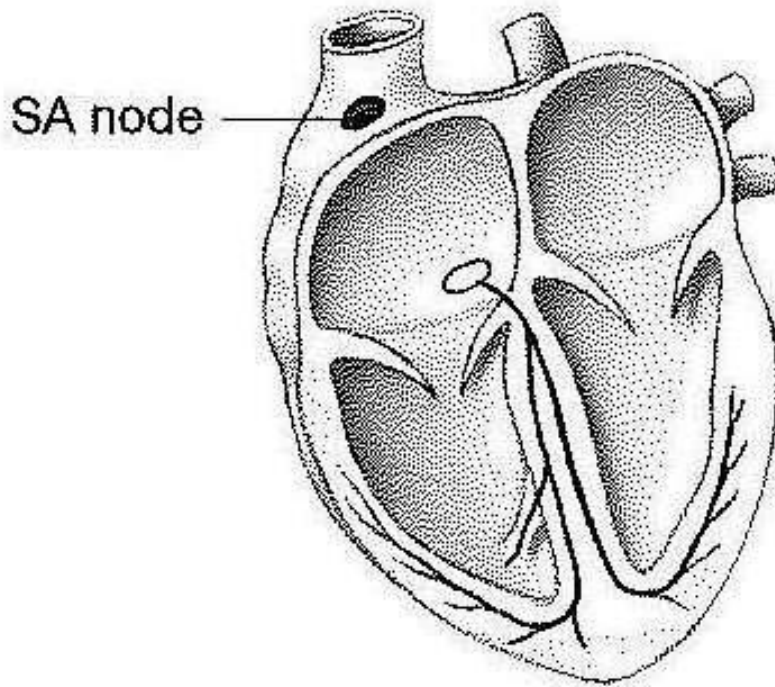
---

---

---

---

---



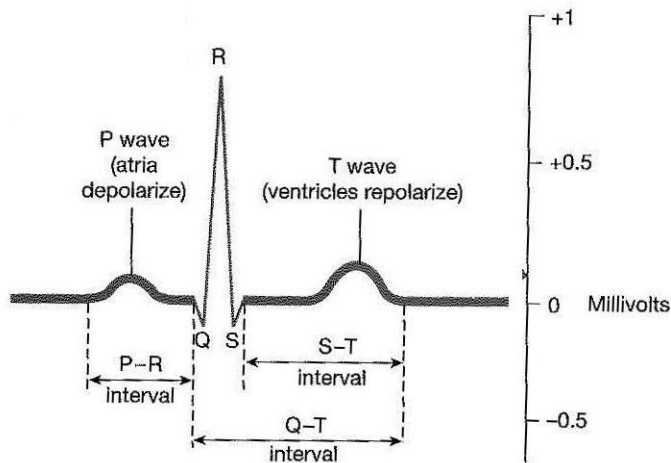
6. What is an electrocardiogram (ECG or EKG)?

---

---

---

7. Describe the events depicted on the cardiogram:



---

---

---

8. Describe the phases of the Cardiac Cycle.